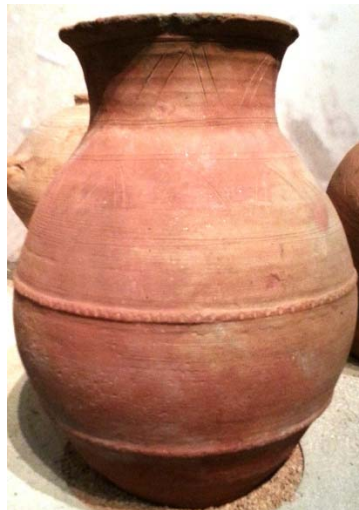


Colloquia Anatolica et Aegaea
Congressus internationales Smyrnenses XIV

Pithoi

in the archaeology of the eastern Mediterranean.

Abstract booklet of the e-conference on the studies of
pithos as a storage and burial vessel
in the ancient Classical and Byzantine world,
8 May 2024 / Izmir, Turkey



Edited by

Ergün Laflı

Izmir 2024

Last update: 16 March 2024.
Number of words: 16,700.

Pitboi in the archaeology of the eastern Mediterranean. Abstract booklet of the e-conference on the studies of pitbos as a storage and burial vessel in the ancient Classical and Byzantine world, 8 May 2024 / İzmir, Turkey, Colloquia Anatolica et Aegaea, Congressus internationales Smyrnenses XIV.

Copyright © 2024 Ergün Laflı (editor)

Main organizer of the e-conference: Ergün Laflı.

All rights reserved.

No part of this publication may be reproduced, stored in a retrieval system, or transmitted, in any form or by any means, electronic, mechanical, photocopying, recording, or otherwise, without the prior written permission from the editor.

ISBN: 978-605-61525-2-8.

Printed in Ada Printing House in Izmir, Turkey on 31 December 2024.

Address: Ada Baskı Merkezi, Adatepe Mah., Kıbrıs Cad. No. 45/A, Buca, TR-35330 Izmir, Turkey.

Scientific referees (in alphabetical order): Erwin Pochmarski (Graz) and Hugo Thoen (Ghent / Deinze).

Page setting: Ergün Laflı (Izmir).

Text corrections and revisions (in alphabetical order): Erwin Pochmarski (Graz) and Hugo Thoen (Ghent / Deinze).

Papers, presented at the international video conference, entitled “*Pitboi in the archaeology of the eastern Mediterranean. An e-conference on the studies of pitbos as a storage and burial vessel in the ancient Classical and Byzantine world*” on 8 May 2024 in Izmir, Turkey.

Eleven papers with 35 pages and numerous colourful figures. All papers and key words are in English.

21 x 29,7 cm; paperback; 40 gr. quality paper.

Frontispiece. *A pitbos from the Μουσείο Βυζαντινού Πολιτισμού, Thessaloniki (photo by E. Laflı, 2012).*

Websites: <<https://www.academia.edu/113427171/>> and
<<https://pithoiconf.hcommons.org/>>.

Studia Anatolica Chris S. Lightfoot dicata



This e-conference is dedicated
to the contributions of Chris S. Lightfoot to Anatolian archaeology

(photo source:
<<https://www.researchgate.net/profile/Christopher-Lightfoot-2>>;
accessed on 31 December 2024).

Table of contents

<i>An introduction to pithos studies: editorial remarks about the proceedings of the conference</i> , by Ergün Laflı.....	6-8.
<i>Program of the international e-conference on pithoi on 8 May 2024</i> , by Ergün Laflı.....	9-10.
<i>Records of the e-conference in YouTube</i> , by Ergün Laflı.....	11.
Papers on the archaeology of pithos.....	12-76.
<i>A study on medieval storage vessels from the territories north and south of the Haemus Mountains (Bulgaria): data, chronology and problems</i> , by Alexander Alexiev.....	13.
<i>The spatial organisation of pithoi in the storerooms of the Amathus' palace during the Classical period</i> , by Lucile Chabrier.....	14.
<i>Small pithoi for domestic storage at Pompeiopolis (northern Turkey)</i> , by Bianca-Elena Grigoraş.....	15.
<i>Stamps with “prophylactic” symbolism on a pithos from the Bukelon fortress near Hadrianopolis (modern Edirne)</i> , by Mariela Inkova and Panayot Antonov.....	16.
<i>“Cistern boats”: the maritime transfer of liquid products in pithoi of the dolia type</i> , by Thomas Iossifidis.....	17.
<i>A Bronze Age pithos from the Peninsula of Halicarnassus (western Turkey)</i> , by Ergün Laflı and Maurizio Buora.....	18.
<i>Roman, Byzantine and Late Medieval pithoi from Halicarnassus (western Turkey)</i> , by Ergün Laflı and Maurizio Buora.....	19–21.
<i>Pithoi from the Izmir collections</i> , by Ergün Laflı and Maurizio Buora.....	22.
<i>Roman pithoi from Cilicia (southern Turkey)</i> , by Ergün Laflı and Maurizio Buora.....	23–24.
<i>Byzantine pithoi from Bergama (ancient Pergamum, western Turkey)</i> , by Ergün Laflı and Maurizio Buora.....	25–28.
<i>A Byzantine pithos found in the Black Sea near Trabzon (north-eastern Turkey)</i> , by Ergün Laflı and Maurizio Buora.....	29.
<i>From Neolithic to modern: pithoi winemaking through the centuries</i> , by Dimitri Van Limbergen and Paulina Komar.....	30.
<i>Fatimid- and early Crusader-period pithoi in Palestine: new insights on their typo-chronology, production technique and provenance</i> , by Itamar Taxel.....	31.
<i>A bibliographical list of Greek, Roman and Byzantine pithoi from Turkey</i> , by Oya Tuncer and Ergün Laflı.....	32–76.
<i>Members of the conference committees</i>	77.

<i>List of the previous Colloquia Anatolica et Aegaea</i>	78.
<i>List of the previous Colloquia Anatolica et Aegaea, Acta congressus communis omnium gentium Smyrnae</i>	79.
<i>Announcement of the session on the EAA conference in Rome in 2024 about pithoi/dolia associated with wine production, by Paulina Komar</i>	80.
<i>Announcement of the next “Colloquia Anatolica et Aegaea” in May 2025, in İzmir</i>	81.

An introduction to pithos studies: editorial remarks about the proceedings of the conference

Ergün Laflı

Professor Ergün Laflı (Izmir)
Çınarlı Mah., Ankara Asfaltı Cad., No. 7, Ege Perla A Kule, 21. Kat, Daire 82, Konak, TR-35110 Izmir, Turkey.
Phone: +90.539.577 07 33; **e-mail:** <elafli@yahoo.ca>.
Website: <<https://deu.academia.edu/ErgunLAFLI/>>.
Orcid ID: 0000-0002-4722-5018.

A *pithos* (πίθος; plural “pithoi” and “dolia” in Latin) was a large storage container form and pithoi were found in relatively large quantities in the entire Mediterranean, from Spain to Syria and Egypt to France, where they were manufactured between the Neolithic and Medieval periods. *Pithoi* were used for bulk storage, primarily for fluids, grains and olives; they were comparable to the drums, barrels and casks of recent times. Beside these uses they were also utilised as burial containers secondarily. During a long time of their use the form and the function of *pithoi* were not changed on the whole. They were exported or imported over the entire eastern Mediterranean.

So far the study of this vessel form has been overlooked, whereas there is still a huge amount of unpublished material from excavations, field surveys and museums in the entire Mediterranean. On September 7-9, 2022 the Catalan Institute of Classical Archaeology has organized in Tarragona the first international meeting on these vessels, entitled as “Dolia in the Hispania provinces in the Roman period. State of the art and new perspectives” (cf. <https://icac.cat/en/actualitat/noticies/2022/doliaexhispaniadeindefinitiveprogramme/>) which focused mostly on the western part of the Roman Mediterranean. In our present e-meeting we only focused on *pithoi* between c. seventh century B.C. and 13th century A.D., and attempt to set out a comprehensive model for the study of *pithoi*, including their definition, typology, chronology, contexts, function, regional characteristics, production and distribution patterns in the whole eastern Mediterranean geographies. It was also our intention to create a complete bibliography of previous publications on *pithoi*.

We warmly invited contributions by scholars and graduate students from a variety of disciplines related to this large vessel form. Intended to bring together scholars of Greek, Roman and Byzantine ceramic archaeology to discuss a range of issues concerning this vessel’s characteristics, this video conference should be an excellent opportunity to increase our knowledge about this form. The following theme groups are the main questions of the symposium which are prescriptive:

- *Pithoi* from archaeological field projects, museums and private collections,
- Graeco-Roman *pithoi* in comparison with the *pithoi* of the Neolithic period, Bronze and Iron Ages in the Near East and eastern Mediterranean,
- Graeco-Roman *pithoi* in comparison with the Minoan and Mycenaean *pithoi*,
- Etymology of *pithoi* in ancient Near Eastern, eastern Mediterranean and Aegean languages,
- Ancient Greek and Latin textual sources on *pithoi*,
- Typological evolution and design of *pithoi*,
- Storage, shipping, weight and measures of *pithoi*,
- Decoration of *pithoi*,
- Manufacturing technics and major production centers of *pithoi* in the Hellenistic, Roman and Early Byzantine periods,
- Distribution of *pithoi*,
- Typological and functional features between *pithoi* and some related storage vessels during the Archaic, Classical, Hellenistic, Roman and Byzantine periods,
- Similar vessel forms in the ancient Near East and their relations to Archaic and Classical Greek *pithoi*,

- What ancient Greeks, Romans and Byzantines thought about afterlife? *Pithoi* in the eastern Mediterranean funerary contexts,
- Domestic and commercial contents of *pithoi*: commodities and their trade through *pithoi* (i.e. *pithoi* as means of networking),
- Relations of *pithoi* to wooden or stone storage vessels,
- Roman *pithoi* in the eastern and western Mediterranean, and their differences,
- Hellenistic and Roman gravestones and other iconographic media depicting *pithoi*,
- *Miscellanea*.

Announcement of a session on the EAA conference in Rome in 2024 about *pithoi*/*dolia* associated with wine production by Paulina Komar is on p. 23.

This video conference took place on 8 May 2024 virtually on Zoom and physically in Buca, Izmir, Turkey. All the lectures and discussions in our e-conference were in English, and were recorded for later viewing on YouTube for participants who were unable to attend the live performance. The YouTube links of the e-conference can be found on p. 10 below. The symposium was first announced in May 2023 (**fig. 1**). Between October 2023 and January 2024 there were more than eleven paper applications from eight countries, including – in alphabetical order – Bulgaria, France, Greece, Israel, Italy, Poland, Romania and Turkey ten of which were accepted as a lecture to be presented at our symposium (**fig. 2**). Thematically papers were divided into five sessions, dealing with different aspects of Greek, Roman and Byzantine *pithoi* (*cf.* the program below). This book was arranged mainly in April 2024 where papers were placed in alphabetical order by the author names. It was constantly being updated in its online version on our *Academia* account. Revised papers will be published in a peer-reviewed proceedings volume in 2026 or 2027.

Several international archaeological meetings under the series of *Colloquia Anatolica et Aegaea, Congressus internationales Smyrnenses* were organized in Izmir and after this current meeting these annual meetings will be organized in electronic form regularly every third week of May (for a list of past meetings and their publications in the series of *Colloquia Anatolica et Aegaea, Acta congressus communis omnium gentium Smyrnae*, please *cf.* at the end of this book). Announcement for our 2025 e-conference is also to be found at the end of this book as well.

This e-conference is dedicated to the contributions of Chris S. Lightfoot to Anatolian archaeology, former curator at the Metropolitan Museum of Art in New York and director of the excavations in Amorium, Phrygia (mod. Emirdağ, Afyonkarahisar).

I would like to thank following colleagues for preparation of this book (in alphabetic order): Dr Hadrien Bru (Besançon), Dr Maurizio Buora (Udine), Mr Mahsun Gazi (Izmir), Professor Erwin Pochmarski (Graz), Dr Itamar Taxel (Jerusalem), Professor Hugo Thoen (Ghent / Deinze) and Ms Zoe Tsiami (Volos).

Fig. 1: Poster of the pithos video conference (by E. Lafli, 2023).



Fig. 2: Map of the sites presented at the video conference on Greek, Roman and Byzantine pithos (by S. Pataci, 2024).

Program of the international e-conference on pithoi on 8 May 2024 / Programme de la e-conférence internationale sur la pithoi du 8 mai 2024

Last update / dernière mise à jour : 31/12/2024.

Please note that appointed times given on the timetable of the conference program are arranged according to the Athens-Izmir time zone which is one hour ahead of Central European Time (CET).

Veuillez noter que les heures indiquées correspondent au fuseau horaire Athènes-Izmir, + 1 heure par rapport au fuseau (CET).

Web link to join to the live meeting on Zoom
/ *Liens Web pour rejoindre la réunion en direct sur Zoom :*
To be announced / *Être annoncé.*

Meeting ID / ID de conférence : To be announced / *Être annoncé.*

Password / Mot de passe : To be announced / *Être annoncé.*

10 h 00 – 10 h 45: Session 1: Opening session / Séance 1: Séance d'ouverture – Chairman / Présidence : To be announced / *Être annoncé.*

Welcoming lecture / Conférence de bienvenue :

10 h 00 Ergün Laflı (Izmir, Turkey)
Introduction.

Opening lecture / Conférence d'ouverture :

10 h 10 Dimitri Van Limbergen (Università degli Studi di Verona, Italy) and Paulina Komar (Uniwersytet Warszawski, Poland)
From Neolithic to modern: pithoi winemaking through the centuries.

10 h 30 Discussion.

10 h 45 – 11 h 00: Break / Pause.

11 h 00 – 12 h 15: Session 2: Use of pithoi in Graeco-Roman periods / Séance 2: Utilisation du pithoi aux périodes gréco-romaines – Chairman / Présidence : To be announced / *Être annoncé.*

11 h 00 Lucile Chabrier (Université Rennes 2, France and Université Laval, Quebec City, QC, Canada).

The spatial organisation of pithoi in the storerooms of the Amathus' palace during the Classical period.

11 h 20 Thomas Iossifidis (Athens, Greece)

“Cistern boats”: the maritime transfer of liquid products in pithoi of the dolia type.

11 h 40 Discussion.

12 h 00 – 13 h 30: Lunch break / Pause déjeuner.

13 h 30 – 14 h 45: Session 3: Use of pithoi in Late Antiquity and Middle Ages / Séance 3: Utilisation du pithoi à la fin de l'Antiquité et au Moyen Âge – Chairman / Présidence : To be announced / *Être annoncé.*

13 h 30 Bianca-Elena Grigoraş (Institutul Naţional al Patrimoniului, Bucharest, Romania)

Small pithoi for domestic storage at Pompeiopolis (northern Turkey).

13 h 50 Mariela Inkova and Panayot Antonov (both from the National Museum of History, Sofia, Bulgaria)

Stamps with “prophylactic” symbolism on a pithos from the Bukelon fortress near Hadrianopolis (modern Edirne).

14 h 10 Alexander Alexiev (Sofia University “St. Kliment Ohridski”, Bulgaria)

A study on medieval storage vessels from the territories north and south of the Haemus Mountains (Bulgaria): data, chronology and problems.

14 h 30 Itamar Taxel (Israel Antiquities Authority, Jerusalem)

Fatimid- and early Crusader-period pithoi in Palestine: new insights on their typo-chronology, production technique and provenance.

14 h 50 Discussion.

15 h 00 – 15 h 10: Break / Pause.

15 h 10 – 16 h 00: Session 4: Italian-Turkish contribution to pithos studies / Séance 4: Contribution italo-turque aux études sur le pithos – Chairman / Présidence : To be announced / *Être annoncé.*

15 h 10 Ergün Laflı (Izmir, Turkey) and Maurizio Buora (La Società Friulana di Archeologia, Udine, Italy)

Stamped pithoi from Bergama (ancient Pergamum, Turkey).

15 h 20 Ergün Laflı (Izmir, Turkey) and Maurizio Buora (La Società Friulana di Archeologia, Udine, Italy)

Pithoi from the Izmir collections.

15 h 30 Discussion.

15 h 40 – 16 h 00: Break / *Pause*.

16 h 00 – 16 h 15: Session 5: Closing session / *Séance 5: Séance de clôture* – Chairman / *Présidence* : To be announced / *Être annoncé*.

Closing lecture / *Conférence de clôture* :

16 h 00 Ergün Lafli (Izmir, Turkey)

Closing remarks and next e-conference in May 2025.

16 h 10 Discussion.

16 h 15: Valediction and closing / *Adhésion et clôture*.

Records of the e-conference in YouTube
/ Enregistrements de la conférence électronique sur YouTube :

All videos:

To be announced / *Être annoncé.*

Studies on the archaeology of pithoi (in alphabetical order)



A Roman pithos excavated in Doğanşehir (ancient Sozopetra), Malatya (eastern Turkey) in 2017;
Archaeological Museum of Malatya.

(photo source:
<<https://www.malatyaozhaber.com/2-bin-yillik-kup-arkeoloji-muzesinde/34499/>>;
accessed on 31 December 2024).

A study on medieval storage vessels from the territories north and south of the Haemus Mountains (Bulgaria): data, chronology and problems

Alexander Alexiev

Mr Alexander Alexiev (Sofia)

Address: Department of Archaeology, Faculty of History, Sofia University “St. Kliment Ohridski”,
15 Tsar Osvoboditel Blvd. BG-1504 Sofia, Bulgaria.

E-mail: <alexander.alexiev.1990@gmail.com>.

Bulgarian scientific literature still lacks a systematic approach to organizing and classifying available information on storage vessels during the Middle Ages (seventh–15 th century AD; **fig. 1**). This deficiency not only impedes our understanding of the ceramic repertoire but also limits comprehension of medieval food and liquid storage practices. Archaeological data indicates a notable absence of pithoi in the territories north and south of the Haemus Mountains (modern day Stara Planina Mountain) during the Medieval period, utterly contrasting with earlier epochs where pithoi were prevalent. Instead, the region witnessed the use of alternative storage pottery forms, such as “pithoid vessels”, commonly found in areas influenced by the Byzantine cultural sphere, like the Balkan peninsula and Asia Minor. Among the primary challenges in studying medieval storage pottery from these lands is the scarcity of reliable chronological evidence. Finds of pithoi from stratified and well dated archaeological contexts are rare, though instances of such receptacles discovered in medieval settings often involve the reuse of vessels from earlier periods. The reasons behind the apparent decline in the use of these containers in the region during the Middle Ages could be various, ranging from shifts in production priorities to the adoption of different storage facilities such as pits, which were abundant during the aforementioned times. This report aims to address the indicated gaps by proposing a framework for the classification and chronology of medieval storage pottery from this part of the Balkan peninsula. By synthesizing existing data and drawing comparisons with neighbouring territories, we seek to unravel the evolution of storage practices in the area during this period.



Fig. 1: A small storage vessel from the settlement, near the village of Zlatna Livada (eleventh-12th century AD), in southern Bulgaria (photo by R. Koleva, 2023).

Keywords: pithoid vessels, storage vessels, Middle Ages, Haemus Mountains, Stara Planina Mountain, Bulgaria, Balkan Peninsula.

The spatial organisation of pithoi in the storerooms of the Amathus' palace during the Classical period

Lucile Chabrier

Ms Lucile Chabrier (Rennes and Quebec City, QC)

Addresses: Université Rennes 2, Place du recteur Henri Le Moal, F-35043 Rennes, France; and
Institut d'études anciennes et médiévales, Université Laval,
1030, avenue des sciences sociales, Quebec City, G1V 0A6, QC, Canada.

Phone: +33.677.574 248; **e-mail:** <Lucile.chabrier@univ-rennes2.fr>.

Pithoi are associated with large-scale and long-term storage, and they may be an indication of the presence of centralised and organised power which controls its territory and has a good administration to manage surplus. They have played a key role in the storage facilities of the Cypriot palace of Amathus during the Iron Age. The discovery of numerous pithoi was one of the most important arguments in the identification of this large building, especially as only the storerooms were excavated: during the classical period – beginning around 500 BCE and ending with the demise of the Amathus kingdom at the outset of the Hellenistic period –, they housed around eighty pithoi. This paper focuses on the importance of pithoi in the storage strategies of the palatial administration during this period. Therefore, it presents the results of a preliminary study on the arrangement of pithoi in the palatial storerooms and particularly on the arrangement of the different capacity groups which have been defined during our doctoral research. This paper aims to shed light on the organisation of the palatial storerooms in the classical period and on the function of the rooms in which they were discovered.

Reference

L. Chabrier, *Les Pithoi des royaumes chypriotes de l'époque archaïque à l'époque classique*, an ongoing thesis project at the Université Rennes 2, <<https://www.theses.fr/s217122>> (accessed on 31 December 2024).

Keywords: spatial organisation, function of pithoi, excavated finds, Cypriot Classical period, Amathus' palace, Cyprus, eastern Mediterranean.

Small pithoi for domestic storage at Pompeiopolis (northern Turkey)

Bianca-Elena Grigoraş

Dr Bianca-Elena Grigoraş (Bucharest)

Address: Institutul Național al Patrimoniului,

c/o Piața Presei Libere nr. 1, Corp B3, parter, sector 1, RO-013701 Bucharest, Romania.

Phone: +40.784.892 497; **e-mail addresses:** <grigoras.biancaelena@gmail.com>, <bianca.grigoras@patrimoniul.ro>.

Websites: <<https://postdoc-uaic.academia.edu/BiancaElenaGrigoras>>, <<https://www.researchgate.net/profile/Bianca-Grigoras-2/research>>.

Orcid ID: 0000-0001-9012-8398.

Pompeiopolis is located in the ancient province of Bithynia and Pontus, 1 km north of Taşköprü and 40 km north-east of Kastamonu in northern Turkey. According to ancient literary sources, the city was founded in 65 BC by Pompei, and the archaeological excavations revealed a continuous habitation from the first century BC to the 13th century AD. The *pithoi* are locally made and present diversity in fabric, shape, capacity, and decoration. The small-sized *pithoi*, which I will present, are dated to the Late Roman and Early Byzantine periods. Their small dimensions and flat base suggest that they were movable. The nice decorations with straight or wavy lines in red or white paint, suggest an intention in the display of wealth. Their shape is uncommon; the rim is vertical, with a flange, an ovoid body, two handles, and a flat base (**Fig. 1**). It may represent a local or provincial shape.

Some details regarding the manufacturing techniques may be noticed. During the coiling of the body, the pieces were mended thanks to some indentations (**Fig. 2**), while the exterior was covered with small bands of clay, left undecorated. Given their small sizes, they played an important household economic role.



Figs 1-2: A pithos and its detailed part from Pompeiopolis, northern Turkey (by B.-E. Grigoraş, 2023).

Keywords: typology, function of pithoi, capacity, excavated finds, Pompeiopolis, Paphlagonia, northern Turkey, Late Roman-Early Byzantine period.

Stamps with “prophylactic” symbolism on a pithos from the Bukelon fortress near Hadrianopolis (modern Edirne)

Mariela Inkova and Panayot Antonov

Dr Mariela Inkova and Mr Panayot Antonov (both from Sofia)

Address: Department of the Bulgarian Lands in the Middle Ages (7th – 17th c.), National Museum of History, 16 УЛ. ВИТОШКО ЛАЛЕ, BG-1618 Sofia, Bulgaria.

Phone numbers: +359.89.573 07 90 (Dr Inkova), +359.88.501 79 59 (Mr Antonov).

E-mail: <panayotva@abv.bg>.

The fortress of Bukelon is located in the immediate hinterland of ancient Hadrianopolis (modern city of Edirne, Republic of Turkey). It lies along the route of the meridional road, which in Late Antiquity connected the Provinces of Moesia Inferior (Moesia Secunda) and Haemimontus in the Diocese of Thracia on the way to the capital city of Constantinople. In the Middle Ages this same road was the main connection between the Bulgarian Tsardom to the north and the Byzantine Empire to the south. It is one of the few fortresses in the region, the name of which is mentioned repeatedly in the historical sources. In Late Antiquity it is mentioned as the seat of a bishop. Regular archaeological surveys began in 2017. The stratigraphy of the cultural layers has been established. The earliest traces of habitation date back to the Early Iron Age. On the plateau of the fortress settlements existed in the Late Iron Age, as well as in the Hellenistic and Roman periods. The impressive fortification system was probably constructed in the fourth–fifth centuries AD and was repaired in the sixth century. There are also traces of reconstruction works carried out in the Middle Ages, specifically in the Middle Byzantine period, judging by the recorded usage of clay instead of mortar in the masonry of some sections of the wall. Numismatic materials span from the Hellenistic to the Ottoman period and indicate almost uninterrupted habitation. The importance of the fortress in the Middle Ages has been additionally confirmed by the discovery of several Byzantine lead seals from the 11th – 13th centuries. In 2022, in the remains of one of the rooms of a building attached to the late antique fortress wall, two fragments of a pithos with cross-shaped stamps applied before the firing were found. Similar finds are known from the area of the Western Black Sea coast and the Attic peninsula, dated to the sixth–seventh centuries. A few examples of graffiti with incised crosses and inscriptions in cursive letters from the area of the Western Black Sea coast and the Lower Danube region suggest their apotropaic, “prophylactic” function in relation to the food supplies preserved in the pithoi.



Figs 1-2: Two pithos fragments with “prophylactic” symbolism from the Bukelon fortress in South-eastern Bulgaria (by P. Antonov, 2023).

Keywords: stamps, “prophylactic” symbolism, graffiti, excavated finds, Bukelon fortress, Moesia Inferior, south-eastern Bulgaria, Edirne, north-western Turkey, Late Roman-Early Byzantine period, epigraphy.

“Cistern boats”: the maritime transfer of liquid products in pithoi of the dolia type

Thomas Iossifidis

Mr Thomas Iossifidis (Athens)

Address: University of Thessaly, c/o 84-86 Μεγλης Αναλάτου, GR-11745 Athens, Greece.

Phone: +30.694.789 30 96; **e-mail addresses:** <thoiosifidis@uth.gr>, <th.iossifidis@yahoo.gr>.

Orcid ID: 0009-0009-5466-4404.

The cistern boats were a special type of merchant ships, which were invented in order to carry out the maritime transfer of a Roman type of pithoi, the dolia. The dolia were large, oval-shaped pithoi with a wide mouth, mainly built to transport and store liquid products of large quantities.

The construction of this type of boat differed from the rest boats of the era. Their unique shipbuilding technique, the dolia were literally an irremovable part of the hull of the ship and after the completion of the ship construction they could not be removed. The life span of the ship was the same with the incorporated dolia's, when one of the two was destroyed, the period of use of the other also ended. Unfortunately, the archaeological remains of cistern boats are limited in number.

The intention of the author is to make an overall assessment of the transport of pithoi by ships (starting from the prehistoric period), to study the shipwrecks of cistern boats as a specific ship category and to analyze the construction characteristics of the dolia and these “tankers of antiquity”.

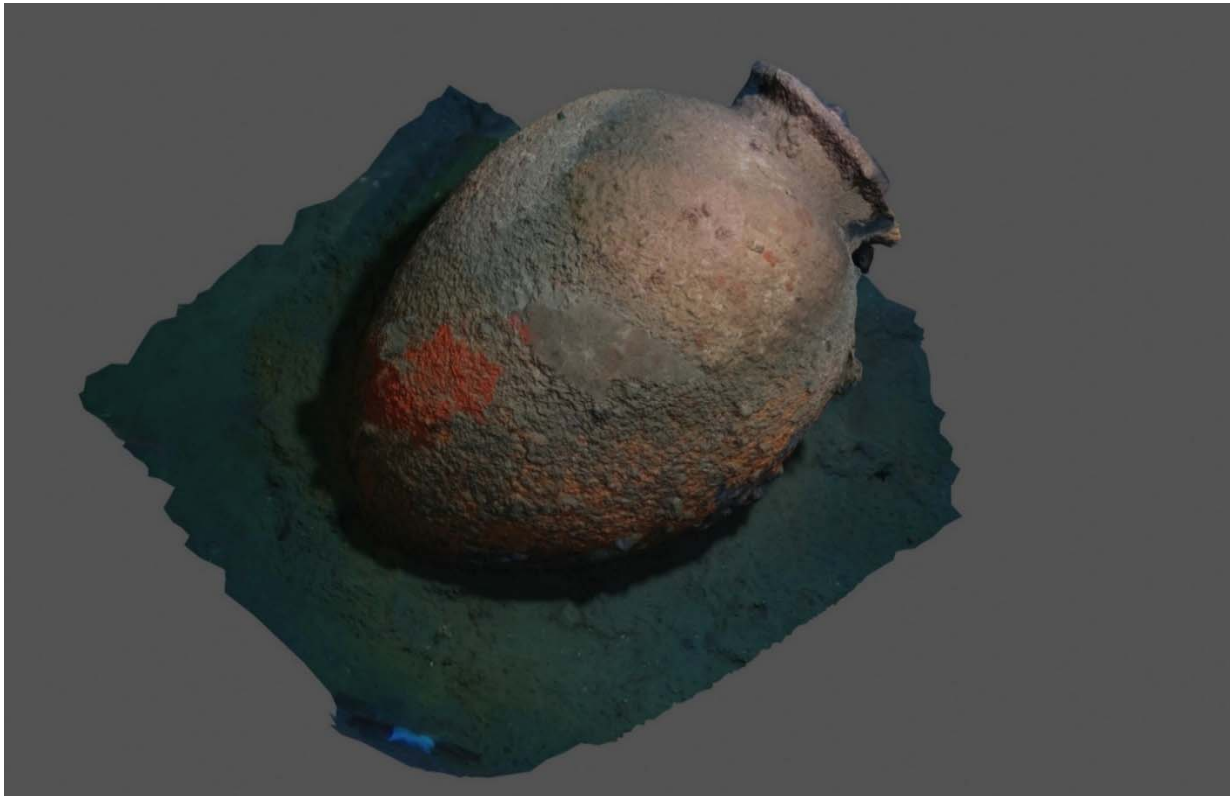


Fig. 1: Larger dolium a two dolia detected on the sea bottom of the Affyssos littoral (Pagassetic Gulf, Greece) through 3D photogrammetry (by N. Karatzas, 2024).

Keywords: dolia, maritime transportation of pithoi, function of pithoi, Greece, classical archaeology.

A Bronze Age pithos from the Peninsula of Halicarnassus (western Turkey)

Ergün Laflı and Maurizio Buora

Professor Ergün Laflı (Izmir)

Address: Çınarlı Mah., Ankara Asfaltı Cad., No. 7, Ege Perla A Kule, 21. Kat, Daire 82, Konak, TR-35110 Izmir, Turkey.

Phone: +90.539.577 07 33; **e-mail:** <elafli@yahoo.ca>.

Website: <<https://deu.academia.edu/ErgunLAFLI/>>; **Orcid ID:** 0000-0002-4722-5018.

Dr Maurizio Buora (Udine)

Address: La Società Friulana di Archeologia, c/o Via Gorizia 16, I-33100 Udine, Italy.

E-mail: <mbuora@libero.it>; **website:** <<https://independent.academia.edu/mauriziobuora/>>.

Orcid ID: 0000-0002-5746-8312.

This burial pithos excavated in 2013 in Çukurbük necropolis site on the Halicarnassus Peninsula in western Turkey is one of the earliest pithos in the Aegean.

Keywords: typology, function of pithoi, burial pithoi, Çukurbük necropolis, Halicarnassus Peninsula, Bodrum, Caria, Bronze Age, second millenium BC.

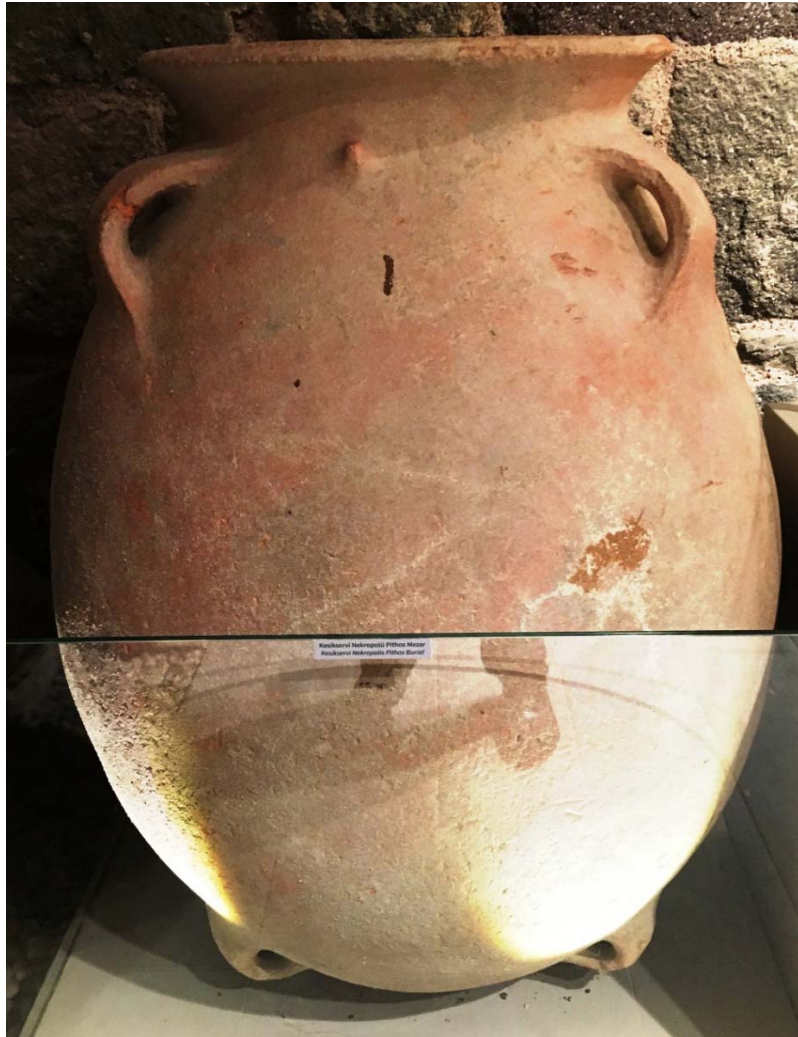


Fig. 1: One of the six burial pithoi from Çukurbük necropolis site on Halicarnassus Peninsula; second millenium BC; Nautical Archaeological Museum of Bodrum (western Turkey) (by E. Lafli, 2024).

Roman, Byzantine and Late Medieval pithoi from Halicarnassus (western Turkey)

Ergün Laflı and Maurizio Buora

Professor Ergün Laflı (Izmir)

Address: Çınarlı Mah., Ankara Asfaltı Cad., No. 7, Ege Perla A Kule, 21. Kat, Daire 82, Konak,
TR-35110 Izmir, Turkey.

Phone: +90.539.577 07 33; **e-mail:** <clafli@yahoo.ca>.

Website: <<https://deu.academia.edu/ErgunLAFLI/>>; **Orcid ID:** 0000-0002-4722-5018.

Dr Maurizio Buora (Udine)

Address: La Società Friulana di Archeologia, c/o Via Gorizia 16, I-33100 Udine, Italy.

E-mail: <mbuora@libero.it>; **website:** <<https://independent.academia.edu/mauriziobuora>>.

Orcid ID: 0000-0002-5746-8312.

No. 1 has ancient renovations and bears an inscription engraved as MK slightly under its rim.

Keywords: typology, function of pithoi, museum finds, Archaeological Museum of Izmir, western Turkey, Roman period, Late Roman-Early Byzantine period, epigraphy.



1a



1b



2



3



4



5



6a



6b

Pithoi from the Izmir collections

Ergün Laflı and Maurizio Buora

Professor Ergün Laflı (Izmir)

Address: Çınarlı Mah., Ankara Asfaltı Cad., No. 7, Ege Perla A Kule, 21. Kat, Daire 82, Konak, TR-35110 Izmir, Turkey.

Phone: +90.539.577 07 33; **e-mail:** <elafli@yahoo.ca>.

Website: <<https://deu.academia.edu/ErgunLAFLI/>>; **Orcid ID:** 0000-0002-4722-5018.

Dr Maurizio Buora (Udine)

Address: La Società Friulana di Archeologia, c/o Via Gorizia 16, I-33100 Udine, Italy.

E-mail: <mbuora@libero.it>; **website:** <<https://independent.academia.edu/mauriziobuora>>.

Orcid ID: 0000-0002-5746-8312.

Keywords: typology, function of pithoi, museum finds, Archaeological Museum of Izmir, western Turkey, Roman period, Late Roman-Early Byzantine period, epigraphy.



Fig. 1: A pithos in the Museum of Selçuk in Ephesus (western Turkey) (by Ö. Özgen, 2016).

Roman pithoi from Cilicia (southern Turkey)

Ergün Laflı and Maurizio Buora

Professor Ergün Laflı (Izmir)

Address: Çınarlı Mah., Ankara Asfaltı Cad., No. 7, Ege Perla A Kule, 21. Kat, Daire 82, Konak, TR-35110 Izmir, Turkey.

Phone: +90.539.577 07 33; **e-mail:** <elafli@yahoo.ca>.

Website: <<https://deu.academia.edu/ErgunLAFLI/>>; **Orcid ID:** 0000-0002-4722-5018.

Dr Maurizio Buora (Udine)

Address: La Società Friulana di Archeologia, c/o Via Gorizia 16, I-33100 Udine, Italy.

E-mail: <mbuora@libero.it>; **website:** <<https://independent.academia.edu/mauriziobuora>>.

Orcid ID: 0000-0002-5746-8312.



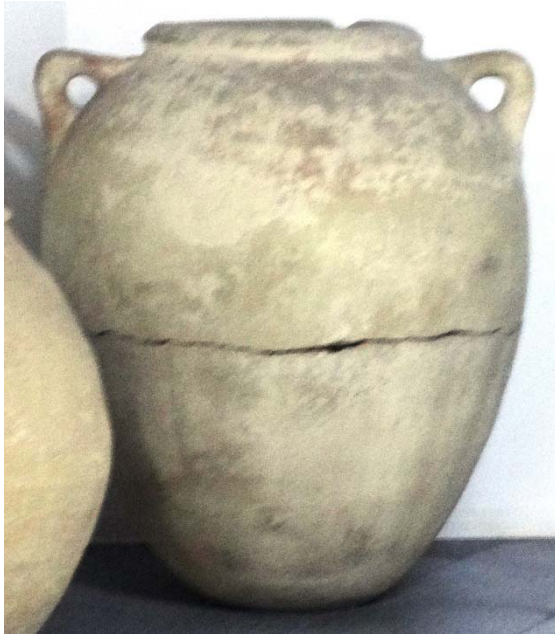
1



2



3



4



5

Figs 1-5: Pithoi from two museums in Cilicia (southern Turkey) (by E. Laflit, 2004).

Keywords: typology, function of pithoi, museum finds, Archaeological Museum of Mersin, Museum of Tarsus, southern Turkey, Roman period.

Byzantine pithoi from Bergama (ancient Pergamum, western Turkey)

Ergün Laflı and Maurizio Buora

Professor Ergün Laflı (Izmir)

Address: Çınarlı Mah., Ankara Asfaltı Cad., No. 7, Ege Perla A Kule, 21. Kat, Daire 82, Konak, TR-35110 Izmir, Turkey.

Phone: +90.539.577 07 33; **e-mail:** <elafli@yahoo.ca>.

Website: <<https://deu.academia.edu/ErgunLAFLI/>>; **Orcid ID:** 0000-0002-4722-5018.

Dr Maurizio Buora (Udine)

Address: La Società Friulana di Archeologia, c/o Via Gorizia 16, I-33100 Udine, Italy.

E-mail: <mbuora@libero.it>; **website:** <<https://independent.academia.edu/mauriziobuora>>.

Orcid ID: 0000-0002-5746-8312.

In the Museum of Bergama (ancient Pergamum) in western Turkey there are 14 pithoi from the Byzantine period which are curated. Typologically these pithoi belong to three main forms.

Type 1

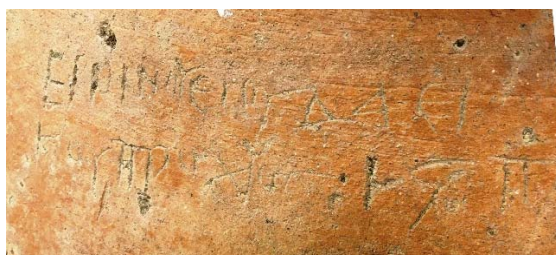
In this type there are eight examples one of which has a graffiti in two lines (**figs 1a-e**) and another has stamped-decoration (**figs 2a-b**).



1a



1c



1d



1e

Graffiti on figs 1b–e

Short graffito on fig. 1b: Upper left on fig. 1b is similar to a Π extending to the right upper bar. Perhaps a ligature was intended here, such as ΠΙ or ΠΤ. The next scratch looks like a X with an A on top left.

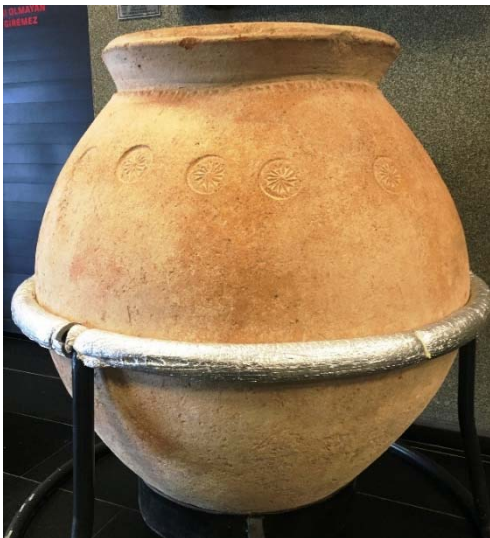
Two-lined graffito on figs 1c–1e:

Transcription.

ΕΙΡΙΝΟΥ ΕΠΙ ΥΔΑΕΙ-
2 ΚΟΥ ΠΡΟΧΙΟΓΙΣ ΠΑΡΑΞΥΔΑΣ.

Epigraphic comments. The first name is Εἰρίνης visibly with the genitive case. After there is the preposition ἐπὶ, then visibly the anthroponym ΥΔΑΕΙΚΟΣ also with the genitive case for which the name Ὑδαεῖς in Mylasa in Caria is known. The first word after ἐπὶ could also be ἰρίνου [“made from the iris”, see *BCH* 22, 1898, 403, DE1, line 9: ἐλαίου εἰρίνου]. After that, we read ΠΡΟΧΙΟΓΙΣ; the last word is at once ΠΑΡΑΞΥΔΑΣ.

Since the graffiti should be dated to the sixth century AD or later, writing conventions from manuscripts could be used by the inscriber. They therefore could also be numerals.



2a



2b



3



5



6

8

Figs 1-8: Eight Byzantine pithoi in the Museum of Bergama (western Turkey) in type 1 (by E. Lafli, 2018).

Type 2

This group is represented with four examples (figs 9-12).



9

11



12

Figs 9-12: Four Byzantine pithoi in the Museum of Bergama (western Turkey) in type 2 (by E. Laflı, 2018).

Type 3

There are two small pithoi which characterize type 3 of Pergamene pithoi (**figs 13-14**).



13



14

Figs 13-14: Two Byzantine small pithoi in the Museum of Bergama (western Turkey) in type 3 (by E. Laflı, 2018).

Acknowledgments (in alphabetical order) Dr Ilias N. Arnaoutoglou (Athens) and Dr Hadrien Bru (Besançon).

Keywords: typology, graffiti, stamps, function of pithoi, museum finds, Museum of Bergama, Pergamum, western Turkey, Byzantine period, epigraphy.

A Byzantine pithos found in the Black Sea near Trabzon (north-eastern Turkey)

Ergün Laflı and Maurizio Buora

Professor Ergün Laflı (Izmir)

Address: Çınarlı Mah., Ankara Asfaltı Cad., No. 7, Ege Perla A Kule, 21. Kat, Daire 82, Konak, TR-35110 Izmir, Turkey.

Phone: +90.539.577 07 33; **e-mail:** <clafli@yahoo.ca>.

Website: <<https://deu.academia.edu/ErgunLAFLI/>>; **Orcid ID:** 0000-0002-4722-5018.

Dr Maurizio Buora (Udine)

Address: La Società Friulana di Archeologia, c/o Via Gorizia 16, I-33100 Udine, Italy.

E-mail: <mbuora@libero.it>; **website:** <<https://independent.academia.edu/mauriziobuora>>.

Orcid ID: 0000-0002-5746-8312.

A Byzantine pithos was discovered in the Black Sea near Araklı in Arsin, ca. 31.3 km east of Trabzon in north-eastern Turkey in 2016 (fig. 1). It is curated today in the Museum of Trabzon.



Fig. 1: A Byzantine pithos discovered in the Black Sea near Araklı in Arsin, in north-eastern Turkish province of Trabzon; Museum of Trabzon (photo credits Hürriyet Daily News of February 15, 2016; <<https://www.hurriyetdailynews.com/huge-pithos-caught-by-fishermen-95220>>).

Keywords: typology, function of pithoi, maritime transportation of pithoi, museum finds, Museum of Trabzon, north-eastern Turkey, Black Sea, Byzantine period.

From Neolithic to modern: pithoi winemaking through the centuries

Dimitri Van Limbergen and Paulina Komar

Dr Dimitri Van Limbergen (Verona)

Address: Università degli Studi di Verona, Dipartimento Culture e Civiltà, Viale dell'Università 4, I-37129 Verona, Italy.

E-mail: <Dimitri.VanLimbergen@UGent.be>.

Websites: <<https://research.flw.ugent.be/en/dimitri.vanlimbergen>>, <<https://www.researchgate.net/profile/Dimitri-Van-Limbergen>>.

Dr Paulina Komar (Warsaw)

Address: Uniwersytet Warszawski, Wydział Historii, Instytut Archeologii, ul. Wóycickiego 1/3, bud. 23, pok. 224, PL-01938 Warsaw, Poland.

Phone: +48.576.082 819.

E-mail addresses: <paulina.komar@uw.edu.pl>, <p.komar@uksw.edu.pl>, <paulina.komar@gmail.com>.

Website: <<https://www.researchgate.net/profile/Paulina-Komar>>.

Orcid ID: 0000-0001-6580-223X.

Clay-jars were standard equipment in winemaking facilities during Greek and Roman antiquities. But actually, they were first attested at the Neolithic site (Areni Cave) and their remains were discovered in many fortresses of the Urartu civilisation. After more than 6,000 years they still remain important elements of traditional winemaking in the Caucasus (Georgia, Armenia) and appear in certain regions in France, Italy, Spain, Portugal and Chile. Nevertheless, these containers vary greatly in the size, shape and technological aspects - some of them are big and round, others small and elongated, some are buried underground, while others stand on its surface.

This presentation will discuss the diversity of clay-jars used for wine fermentation starting from the Neolithing and up to the modern period. It will describe their main characteristics, as well as try to establish how they differed from dolia and pithoi used for purposes other than wine fermentation.

Reference

D. Van Limbergen, *Methods in ancient wine archaeology* (forthcoming at Bloomsbury) <<https://www.bloomsbury.com/uk/methods-in-ancient-wine-archaeology-9781350346642/>>.

Keywords: function of pithoi, winemaking, chronology, Neolithic period, Urartians, Graeco-Roman periods.



Fig. 1: A dolium from Villa dei Quintili, Rome (by P. Komar, 2023).

Fatimid- and early Crusader-period *pithoi* in Palestine: new insights on their typo-chronology, production technique and provenance

Itamar Taxel

Dr Itamar Taxel (Jerusalem)

Address: Pottery Specializations Branch, Archaeological Research Department, Israel Antiquities Authority,
P.O.B. 586, IL-91004 Jerusalem, Israel.

Phone numbers: +972.2.589 22 48, +972.52.338 89 62; **e-mail:** <itamartaxel@gmail.com>.

Websites: <<https://antiquities.academia.edu/ItamarTaxel/>>,
<<https://www.researchgate.net/profile/Itamar-Taxel>>.

Orcid ID: 0000-0002-4739-1956.

Excavations carried out at Islamic and medieval sites in Israel revealed evidence for a certain increase in the use of exceptionally large stationary storage jars (*pithoi*; Arabic: *azjar*, sing. *zār*) in the eleventh and twelfth centuries, namely in the main part of the Fatimid period and the early Crusader period, compared to the previous centuries. These containers represent a few types which differ in size, morphology (mainly of the rim-neck profile) and fabric; however, no systematic study of these vessels has yet been conducted. This lecture presents a certain group of Fatimid-Crusader *pithoi*, represented by two complete and some fragmentary examples found in coastal and inland sites, which are characterized by an oval body (over 1.3 m high and 0.9 m wide), flattened base, four handles and everted neck with out-folded rim. The jars' body was handmade, apparently in the coil technique, with the neck produced separately on a wheel. Their fabric characteristics suggest a foreign origin, perhaps in a more northern region of the Levant, and a petrographic study in progress will hopefully pinpoint the provenance of these jars. This detail, alongside an analysis of the jars' distribution, contexts of use and reuse, and hypothetical function, shed new light on a hitherto overlooked aspect of medieval material culture in the southern Levant.



Fig. 1: A Fatimid pithos from Jerusalem (by I. Taxel, 2023).

Keywords: function of pithoi, typology, chronology, production, distribution, provenance, archaeometry, Fatimid-Crusader period, Middle Ages, Palestine, Israel, Medieval Near East.

Pithoi from Turkey: a bibliographical corpus based on four Turkish periodicals

Oya Tuncer and Ergün Laflı

Ms Oya Tuncer (Dokuz Eylül University, İzmir)
Dokuz Eylül Üniversitesi, Edebiyat Fakültesi, Arkeoloji Bölümü,
Tınaztepe/Kaynaklar Yerleşkesi, Buca, TR-35160 İzmir, Turkey.
E-mail: <oya.tuncerr@gmail.com>.

Professor Ergün Laflı (İzmir)
Address: Çınarlı Mah., Ankara Asfaltı Cad., No. 7, Ege Perla A Kule, 21. Kat, Daire 82, Konak,
TR-35110 İzmir, Turkey.
Phone: +90.539.577 07 33; **e-mail:** <clafli@yahoo.ca>.
Website: <<https://deu.academia.edu/ErgunLAFLI/>>; **Orcid ID:** 0000-0002-4722-5018.

Abstract: In this bibliographical study, the data concerning the Greek, Roman and Byzantine pithoi from excavations, field surveys and rescue excavations in Turkey are obtained from four Turkish periodicals (the official annual reports of the Turkish General Directorate of Monuments and Museums). The object of this bibliographical list is to compile all the find evidence of this container form in one Mediterranean landscape and to create a base for future research.

Keywords: excavations, field surveys, rescue excavations, Asia Minor, Turkey, Anatolia, Archaic period, Classical period, Hellenistic period, Roman period, Byzantine period.

Introduction

Although a large number of pithoi have been found in excavations and are preserved in museums in Turkey, research concerning them has so far been limited. Only the Greek, Roman and Byzantine pithoi from, among others (in an alphabetical order) Amorium, Cilicia, Cnidus, Ephesus, Hierapolis, Labraunda, Laodicea on the Lycus, Patara, Perge, Pessinus, Pisidian Antioch, Sagalassus, Smyrna, Tarsus and Tarsus (Donuktaş) as well as museum collections in, among others, Adana and İzmir have been thoroughly studied and published (**map 1**). Otherwise, there is little other than brief notes on scattered examples discovered during excavations, field surveys and rescue operations in various parts of Turkey reported in four archaeological periodicals, mostly without any illustration or detailed information (see **table 1** below). In these preliminary studies some of the pithoi have been dated erroneously, their association with grave goods was not reported, and so far no typology has been established. In addition, the issues related to their function, production, distribution and chronology have not been taken sufficiently into account. A comprehensive study covering all the finds of pithoi in Anatolia has not been carried out, and very little archaeometric research concerning their fabric and sources of clay for their production have been undertaken.

In this bibliographical study, the data concerning the Greek, Roman and Byzantine pithos finds from excavations, field surveys and rescue excavations in Turkey were obtained from four Turkish periodicals (**table 1**) which are the official annual reports of the General Directorate of Monuments and Museums, a subdivision belonging to the Turkish Ministry of Culture and Tourism. These periodicals are ‘Kazı Sonuçları Toplantıları’ (Turkish annual meetings for the results of excavations) from 1979 to the present, ‘Araştırma Sonuçları Toplantıları’ (Turkish annual meetings for the results of archaeological field surveys) from 1983 to the present, and ‘Müze Çalışmaları ve Kurtarma Kazıları Sempozyumu’ (Turkish annual meetings for the results of museum work and rescue excavations; see ‘Abbreviations’ below) from 1990 and 2001 to the present, all four of which are available online on the website of the Turkish General Directorate of Monuments and Museums.¹ The object of this bibliographical corpus is to compile all the find evidence for this

¹ <<https://kvmmg.ktb.gov.tr/TR-44758/yayinlarimiz.html>> (accessed 1 January 2023).

vessel form in one Mediterranean landscape and to create a base for future research. The list consists of the find spots of each find, their find year, context, number, typologies and finally dating according to their publishers. A find number for each find is given in the left-hand column. Each bibliographical entry is accompanied by an acronymous reference at the end.

Find Number	Excavated or surveyed sites in Turkey	Find Year	Context	No. of examples and their typology	Dating	References
1	Kyme	1979	A1	Two pieces, bottom	-	2. KST, s. 142
2	Hassek Höyük	1980	-	Two examples	Chalcolithic Period	3. KST, s.105
3	Datça Yarımadası Karnıcak Tepe	1981	-	Several examples (grave)	Archaic Period	4. KST, s. 360
4	Sualtı Araştırmaları Karatoprak - Bodrum	1981	-	Two Pieces	Roman period	4. KST, s. 374
5	Boğazköy - Hattuşa	1982	9 Nolu Bina	Several Pieces	-	5. KST, s. 145
6	Clazomenae	1982	2 ve 3 nolu duvar H bölmesi (Akropolis)	Several Pieces (Used Floor)	M.Ö. 525	5. KST, s. 222
7	Clazomenae	1982	20/L, VI-X/f-k (Akropolis)	Several pieces (Used Wall)	-	5. KST, s. 222
8	Clazomenae	1982	1A Duvarı (kuzey- güney) (Akropolis)	Several Pieces (Construction material)	-	5. KST, s. 223
9	Clazomenae	1982	G Bölgesi II. Yapıkatı (Akropolis)	Several Pieces (Used floor)	M.Ö. 580-570	5. KST, s. 224
10	Clazomenae	1982	Akropolis Sur Çalışması	Several Pieces	-	5. KST, s. 225
11	Liympa	1982	-	Several Pieces	-	5. KST, s. 253

12	Karataş-Semayük	1983	AQ 367	One Example	Early Bronze	6. KST, s.104 AJA 73, 1969,pp. 324-327
13	Karataş-Semayük	1983	-	Sevaral example	Early Bronze	6. KST, s.104
14	Karataş-Semayük	1983	-	One Example	Early Broze	6. KST, s.104 (AJA 69, 1965, pl. 61: 12; AI 68, 1964, pl. 80: 15
15	Boğazköy-Hattuşa	1983	0.St.3 Tabakası	Several Pieces	Byzantine Period	6. KST, s.155
16	Tille Höyük	1983	-	One Example (?)	-	6.KST, s.249
17	Tille Höyük	1983		Two examples	-	6. KST, s.249
18	Hassek Höyük	1984	-	One Example	-	7. KST, s. 90
19	Karataş-Semayük	1984	Karataş trench IV	One example KA 79IN (tomb)	Second Millenium B.C.	7. KST, s.288
20	Karataş-Semayük	1984	Karataş trench VI a-d	One example KA 79ON (tomb)	Second Millenium B.C.	7. KST, s.288
21	Karataş-Semayük	1984	Bağbaşı trench 107	One example	Second Millenium B.C.	7. KST, s.289
22	Bergama	1984	4060/17c	One example	Byzantine Period	7. KST, s.344
23	Perge	1984	Ana sütunlu cadde 38. Ve 39. Bina	One example	-	7. KST, s.400
24	Caunus	1984	Teras Tapınağı	One example	Late Roman- Eraly Byzantine Period	7. KST, s.525
25	Uluburun Shipwreck	1984	-	One example	Fourteenth Century B.C.	7. KST, s.626

26	Tille Höyük	1985	7359-7360	Three Example	Half of the second Millenium B.C.	8. KST, Vol. 1, p. 207
27	Panaztepe	1985	Mezarlık Alanı	Ten example, (tomb)	Bronze Age	8. KST, Vol. 1, p. 255
28	Sardis	1985	-	One example	Roman period	8. KST, Vol. 1, p. 383
29	Miletus	1985	Heroon I	Several Pieces	Hellenistic and Roman period	8. KST, Vol. 2, s. 189
30	Uluburun Shipwreck	1985	KW 250	One example	Fourteenth Century B.C.	8. KST, Vol. 2, s. 295, 296
31	Panaztepe	1986	K-L/14-15	One example, (tomb)	Second Millenium B.C.	9. KST, Vol. 1, p. 347
32	Panaztepe	1986	A ve B Tholosları	One example, (tomb)	-	9. KST, Vol. 1, p. 348
33	Ulu Burun - Kaş	1986	LN 10-LN 11 KW 253-KW254	Several example	-	9. KST, Vol. 1, p. 372,376,377,378,379
34	Elmalı – Semayük Karataş	1986	KA 239	One example, (Tomb)	-	9. KST, Vol. 2, s. 22
35	Uluburun - Kaş	1987	P 14-15 squares	One example KW 252	-	10. KST, Vol. 1, p. 309
36	Uluburun - Kaş	1987	-	One example KW 250	-	10. KST, Vol. 1, p. 309
37	Van Kalesi – Eski Van Şehri	1987	1 No'lu Mekan	Several example	9. – seventh century B.C.	10. KST, Vol. 1, p. 375
38	Bergama	1987	(4050/81- 82 ve 91- 92	Two example	Middle age	10. KST, Vol. 2, s. 67
39	Köşk Höyük	1988	-	Two example, (tomb)	Chalcolithic period	11. KST, Vol. 1, p. 92

40	Gavurtepe - Alaşehir	1988	Güney Açması	One example	Early Bronze age	11. KST, Vol. 1, p. 180
41	Arslantepe	1988	-	One example	-	11. KST, Vol. 1, p. 192
42	Uluburun Shipwreck	1988	-	Two pieces	-	11. KST, Vol. 1, p. 320
43	Uluburun Shipwreck	1988	H21 square	One example	-	11. KST, Vol. 1, p. 321
44	Köşk Höyük	1989	Kuzeydoğu II Açması I-J/6-8 square	One Example, (tomb)	-	12. kst, Vol. 1, p.97
45	Datça/Reşadiye –Kiliseyanı Seramik Atölyeleri	1989	3 No'lu sektör	One example, (tomb)	-	12.kst, Vol. 1, p.159
46	Oylum Höyük	1989	-	Several example	Late Bronze age	12. KST, Vol. 1, p.263
47	Uluburun Shipwreck	1989	-	Several Pieces	-	12. KST, Vol. 1, p. 299
48	Tille Höyük	1989	-	One Example	Late Bronze Age	12. KST, Vol. 1, p. 312
49	Porsuk	1989	II no'lu açma	Three example	Bronze Age	12. KST, Vol. 1, p. 444
50	Porsuk	1989	IV no'lu açma J square	Three Example	Bronze Age	12. KST, Vol. 1, p. 446
51	Pergamum	1989	Uzun Yapı	Several example	Late Byzantine Period	12. KST, Vol. 2, s. 196
52	Amorium	1989	PESS 89/1/6 Tomb 81	One example (pithos 29)	-	12. KST, Vol. 2, s. 274
53	Amorium	1989	PESS 89/1/6 Tomb 87	One example (pithos 90)	-	12. KST, Vol. 2, s. 274, 281

54	Amorium	1989	PESS 89/1/6 Tomb 113	One example (pithos 30)	-	12. KST, Vol. 2, s. 280
55	Amorium	1989	PESS 89/1/5	One example (pithos 71)	-	12. KST, Vol. 2, s. 282
56	Arslantepe	1990	D6(8)-D6(12)	One example	Early Bronze Age	13. KST, Vol. 1, p.181
57	Gavurtepe, Alaşehir	1990	GT 90-51, 28	Several Example	-	13. KST, Vol. 1, p.228
58	Göltepe, Niğde	1990	-	One example	Early Bronze Age	13. KST, Vol. 1, p.277
59	Kaman - Kalehöyük	1990	Kuzey IV-V	One example	Second Millenium B.C.	13. KST, Vol. 1, p.322
60	Uluburun Shipwreck	1990	F/G-19/24	One example	-	13. KST, Vol. 1, p.388
61	Uluburun shipwreck	1990	M/P-24/26	One pieces, bottom	Late Hellenistic – Roman period	13. KST, Vol. 1, p.390
62	Panaztepe	1990	İkinici nekropol alanı U/79	Three example, (tomb)	Bronze age	13. KST, Vol. 1, p.450,451
63	Pergamum	1990	Mozaikli Mekan	One pieces, (bottom)	Byzantine Period	13. KST, Vol. 2, s.23,24
64	Assos	1990	CX Square h-i/5	One example, (tomb)	-	13. KST, Vol. 2, s.44,45,46,
65	Hierapolis	1990	-	One example	Byzantine Period	13. KST, Vol. 2, s.132
66	Pessinus	1990	PESS 90/18	One example (Pitos15)	-	13. KST, Vol. 2, s.348
67	Pessinus	1990	PESS 90/17	One example (pitos29)	-	13. KST, Vol. 2, s.349

68	Arslantepe	1991	A682	One example (tomb)	-	14. KST, Vol. 1, p.219
69	Porsuk	1991	B2-C2 square	Several example	-	14. KST, Vol. 1, p.261
70	Porsuk	1991	B3-B4 square	Several pieces	-	14. KST, Vol. 1, p.264
71	Uluburun Shipwreck	1991	-	One example KW 251	-	14. KST, Vol. 1, p.351
72	Uluburun Shipwreck	1991	K/L-28/21 square	Two pieces bottom	-	14. KST, Vol. 1, p.352
73	Uluburun Shipwreck	1991	F/G-22/23	One example	-	14. KST, Vol. 1, p.353
74	Van Dilkaya Höyüğü	1991	-	Several example	Early Bronze Age	14. KST, Vol. 1, p.473
75	Panaztepe	1991	L/16, II-VI/a-c	One example, tomb	-	14. KST, Vol. 1, p.497
76	Panaztepe	1991	K-L/16-18	One example	-	14. KST, Vol. 1, p.497
77	Metropolis	1991	-	Two example	Byzantine Period	14. KST, Vol. 2, s.366
78	Patara-Tepecik Nekropolü	1991	Doğu Nekropol-I	Two example	-	14. KST, Vol. 2, s.392,393
79	Büyüktepe Höyük	1992	-	One example	The Late Hellenistic – Earlr Roman period	15. KST, Vol. 1, p. 232
80	Limantepe	1992	Bastiyon	One example	Sixth century B.C.	15. KST, Vol. 1, p. 367
81	Uluburun Shipwreck	1992	-	Seeveral Example	14. – 13. Century B.C.	15. KST, Vol. 1, p. 376

82	Uluburun shipwreck	1992	J-L 31, J-L 37 square	Two example (bottom)	14.-13. Century B.C.	15. KST, Vol. 1, p. 381
83	Uluburun Shipwreck	1992	B-28,29,30	-	-	15. KST, Vol. 1, p. 383
84	Üçtepe Höyüğü	1992	XII No'lu açma	Two examples	Middle Bronze Age	15. KST, Vol. 1, p. 403
85	Karataş-Semayük	1992	-	One Example, (Tomb)	Iron age	15. KST, Vol. 1, p. 459
86	Panaztepe	1992	L/18, M//18-19	Two examle, (tomb)	-	15. KST, Vol. 1, p. 462,463
87	Panaztepe	1992	-	Seven example, (tomb)	-	15. KST, Vol. 1, p. 463
88	Panaztepe	1992	L/19	Five big example, (tomb)	-	15. KST, Vol. 1, p. 463
89	Panaztepe	1992	-	Several small example, (tomb)	-	15. KST, Vol. 1, p. 463,464
90	Panaztepe	1992	AJ	One big example, (Tomb)	-	15. KST, Vol. 1, p. 464
91	Panaztepe	1992	I.-II. Mezarlık alanı	Twelve example, (tomb)	Second Millenium B.C.	15. KST, Vol. 1, p. 464
92	Şarhöyük-Dorylaeum	1992	-	One exampe	550-350 B.C.	15. KST, Vol. 1, p. 486
93	Aezani	1992	-	One example	-	15. KST, Vol. 1, p. 519
94	Pergamum	1992	-	One example	-	15. KST, Vol. 1, p. 563, 571
95	Patara, Tepecik Nekropolü	1992	Liman Hamamı	Two example	-	15. KST, Vol. 2, s. 286

96	Xanthos-Letoon	1992	-	One example	-	15. KST, Vol. 2, s. 309
97	Metropolis	1992	-	Two example	-	15. KST, Vol. 2, s. 419
98	Gavurtepe Höyüğü, Alaşehir	1992	Güney açma, 92 E-D	Two example	-	15. KST, Vol. 2, s. 422, 423
99	Göltepe	1993	Area E E62-E67/E69/E70	Several example	-	16. KST, Vol. 1, p. 180
100	Uluburun Shipwreck	1993	-	One example	-	16. KST, Vol. 1, p. 219
101	Uluburun Shipwreck	1993	K-P/5, LPI6	One example	-	16. KST, Vol. 1, p. 220
102	Uluburun shipwreck	1993	A-M/33-37	Nine example	-	16. KST, Vol. 1, p. 228
103	Panaztepe	1993	L-M/13, J/16	One example (tomb)	Second Millenium B.C.	16. KST, Vol. 1, p. 284
104	Panaztepe	1993	K-L/13	One example (tomb)	Second Millenium B.C.	16. KST, Vol. 1, p. 284
105	Miletus	1993	Survey	Several examples (tom b)	Bronze Age	16. KST, Vol. 1, p. 408
106	Pergamum	1993	-	One example	Byzantine Period	16. KST, Vol. 2, s. 7
107	Pessinus	1993	-	Several pieces	-	16. KST, Vol. 2, s. 79
108	Amorium	1993	Yukarı şehir L açması	Two example	-	16. KST, Vol. 2, s. 135,137
109	Uluburun Shipwreck	1994	K-P15, L-P16	One example, several pieces	-	17. KST, Vol. 1, p. 217,218,224,

110	Troy	1994	E8 E9 Açmaları	Several example	Troy VII	17. KST, Vol. 1, p. 288
111	Troy	1994	Ilion Aşağı Şehir Kutsal alan	One example	Troy IV-IV	17. KST, Vol. 1, p. 290
112	Ayanis Kalesi	1994	VII. No'lu alan	Several example	-	17. KST, Vol. 1, p. 367
113	Ayanis Kalesi	1994	VIII. No'lu Alan, ZZ 30a plankare	Several pieces	-	17. KST, Vol. 1, p. 368,369
114	Cyzicus	1994	Hadrian Tapınağı	One example	-	17. KST, Vol. 2, s. 313
115	Oylum Höyük	1995	WIIb-XIIa-b açmaları	Three example	Early Iron Age	18. KST, Vol. 1, p. 191
116	Oylum Höyük	1995	Y IIa-b açmaları	Three example	-	18. KST, Vol. 1, p. 192
117	Ayanis Kalesi	1995	V No'lu açma C36c plankaresi	One example	-	18. KST, Vol. 1, p. 364
118	Ayanis Kalesi	1995	VII No'lu alan, 1 No'lu Magazin Yapısı	Nine example	-	18. KST, Vol. 1, p. 367
119	Pessinus	1995	-	One example	-	18. KST, Vol. 1, p. 502
120	Burgaz	1995	SE.8.5.B	One Example	Late Classical period	18. KST, Vol. 2, s. 256
121	Burgaz	1995	ZA sektörü	One Example	-	18. KST, Vol. 2, s. 259
122	Sinop-Demirci Amphora Atölyeleri	1995	-	Three example, one pieces	-	18. KST, Vol. 2, s. 355, 357
123	Baklatepe	1996	Mezarlık alanı	Two examples (tomb)	Early Bronze Age	19. KST, Vol. 1, p. 411

124	Baklatepe	1996	Mezarlık alanı	Two examples (tomb)	Early Chalkolithic Age	19. KST, Vol. 1, p. 415
125	Troy	1996	Aşağı Şehir, Kalenin Batısı	Six example	Troy VIIa	19. KST, Vol. 1, p. 431
126	Panaztepe	1996	Güney mezarlık Alanı	Several examples (tom b)	13.-14. Century B.C.	19. KST, Vol. 1, p. 460,461,462,463
127	Ayanis Kalesi	1996	VII No'lu Alan K15 square	Thirty example	-	19. KST, Vol. 1, p. 596,597,598
128	Ayanis Kalesi	1996	VIII No'lu alan	Several Example	-	19. KST, Vol. 1, p. 598
129	Ephesus	1996	Tetragonos Agora	One example	Half of the sixth century B.C.	19. KST, Vol. 1, p. 729
130	Phocaea	1996	-	Several example	Half of the sixth century B.C.	19. KST, Vol. 1, p. 780
131	Cyzicus	1996	-	Several pieces	Roman period	19. KST, Vol. 2, s. 372
132	Gökçeada-Yenibademli Höyük	1997	H10 square No. 9 (Wall)	Several Pieces in the wall	Early Bronze Age	20. KST, Vol. 1, p. 315
133	Gökçeada-Yenibademli Höyük	1997	No.1-3 (Wall)	Several pieces	Early Bronze Age	20. KST, Vol. 1, p. 316
134	Panaztepe	1997	I. Mezarlık Alanı	Several examples (tom b)	-	20. KST, Vol. 1, p. 374,375,376
135	Aşağı ve Yukarı Anzaf Urartu Kaleleri	1997	Teras Yapıları	Several Pieces	seventh century B.C.	20. KST, Vol. 1, p. 511
136	Aşağı ve Yukarı Anzaf Urartu Kaleleri	1997	Depo ve Mutfak Yapıları	One example and several pieces	End of the seventh century B.C.	20. KST, Vol. 1, p. 512
137	Ayanis-Urartu Kalesi	1997	K 15d square	Several example	-	20. KST, Vol. 1, p. 529,530

138	Ayanis-Urartu Kelsi	1997	L 15d square	Six example	-	20. KST, Vol. 1, p. 530
139	Gordion	1997	-	One example	-	20. KST, Vol. 1, p. 562
140	Miletus	1997	-	One example	M.Ö. 1500	20. KST, Vol. 1, p. 585,597
141	Bayraklı	1997	-	Several example	-	20. KST, Vol. 2, s. 33,34,38,41
142	Clazomenae	1997	Akpınar Nekropolisi H Hücresi	One example	seventh century B.C.	20. KST, Vol. 2, s. 70,76
143	Aezani	1997	-	One example	-	20. KST, Vol. 2, s. 322, 326
144	Metropolis	1997	Akropol	One example	Byzantine Period	20. KST, Vol. 2, s. 338
145	Demirci-Sinop Amphora Atölyeleri	1997	S23-R23 square	One example	5. Centry B.C.	20. KST, Vol. 2, s. 448
146	Demirci-Sinop Amphora Atölyeleri	1997	Ö25-27/R25-27 Square	Several pieces	-	20. KST, Vol. 2, s. 449
147	Demirci-Sinop Amphora Atölyeleri	1997	P 26 square	Several Pieces	-	20. KST, Vol. 2, s. 449
148	Tarsus Cumhuriyet Alanı	1997	6I square	Several pieces	-	20. KST, Vol. 2, s. 465
149	Demre-Myra St Nicholas Church	1997	B yapısı Batı Mekanı	One example	-	20. KST, Vol. 2, s. 484
150	Troy	1998	Aşağı Şehir Kalenin Batısı y7/8 A7/8 z5 Square	Several example	Troy VI	21. KST, Vol. 1, p. 289,296
151	Ayanis Kalesi	1998	VII. No'lu Alan	Several example	-	21. KST, Vol. 1, p. 398,400

152	Ayanis Kalesi	1998	Pınarbaşı	One example (tomb)	Roman period	21. KST, Vol. 1, p. 400
153	Anzaf Kaleleri	1998	Depo ve Mutfak Yapıları	Several example	-	21. KST, Vol. 1, p. 454,455
154	Clazomenae	1998	L bölmesi	One example	seventh century B.C.	21. KST, Vol. 2, s. 49
155	Eski Van Hüsrev Paşa Külliyesi	1998	E4 F4 Squares	One example	-	21. KST, Vol. 2, s. 418
156	Oylum Höyük	1999	-	example	-	22. KST, Vol. 1, p. 224,225,226
157	Gökçeada Yenibademli Höyük	1999	G 10 Açması	One pieces	Early Bronze Age	22. KST, Vol. 1, p. 248
158	Gökçeada Yenibademli Höyük	1999	G 10 Açması	Three example	Early Bronze Age	22. KST, Vol. 1, p. 248,249,250
159	Van-Yonca Tepe Kalesi ve Nekropolü	1999	E7 Açması	Several example	-	22. KST, Vol. 1, p. 370
160	Anzaf Kaleleri	1999	-	Several example	-	22. KST, Vol. 1, p. 388,390
161	Anzaf Kaleleri	1999	Pithoslu Yapılar	Several example	-	22. KST, Vol. 1, p. 390,391,395,396,398
162	Clazomenae	1999	-	One example (tomb)	Protogeometric period	22. KST, Vol. 2, s. 32,38
163	Şarhöyük-Dorylaeum	1999	-	One example	-	22. KST, Vol. 2, s. 53
164	Şarhöyük-Dorylaeum	1999	H-14, I-14	Two example	-	22. KST, Vol. 2, s. 53,61
165	Cnidus	1999	G odası	One example	-	22. KST, Vol. 2, s. 96

166	Zeugma	1999	-	Seeveral pieces	-	22. KST, Vol. 2, s. 222
167	Aenus	1999	7 No'lu Mezar	One piece	-	22. KST, Vol. 2, s. 373
168	Sagalassus	2000	-	One example	-	23. KST, Vol. 1, p. 14
169	Clazomenae	2000	-	One example	Fourth century B.C.	23. KST, Vol. 1, p. 42
170	Clazomenae	2000	Büyük Yapı	One example	Fourth century B.C.	23. KST, Vol. 1, p. 46
171	Clazomenae	2000	Akpınar nekropolü	Three example (tomb)	seventh century B.C.	23. KST, Vol. 1, p. 48
172	Şaraga Höyük	1999-2000	j-/18 Açması	Four example	-	23. KST, Vol. 1, p. 113
173	Panaztepe	2000	-	Several examples (tom b)	Late Bronze Age	23. KST, Vol. 1, p. 306,307,309,311-312,324
174	Limantepe	2000	A1 – A2 alanları	Several Pieces	Fifth century B.C.	23. KST, Vol. 1, p. 381
175	Oylum Höyük	2000	-	example	-	23. KST, Vol. 2, s. 14
176	Burgaz	2000	BZ.00.NE.5.8.A Açması	One pieces (mouth)	-	23. KST, Vol. 2, s. 42
177	Burgaz	2000	BZ.00.SE.4.2.C Açması	One pieces (bottom)	sixth century B.C.	23. KST, Vol. 2, s. 43
178	Sinop-Demirci Amphora Atölyeleri	2000	Fırın Güneyi	Two example	-	23. KST, Vol. 2, s. 236
179	Amorium	2000	XD-XB Açmaları	Several pieces (in the floor)	-	23. KST, Vol. 2, s. 244

180	Amorium	2000	XD-XB Açmaları	Several Pieces	-	23. KST, Vol. 2, s. 245
181	Van-Yoncatepe Kalesi ve Nekropolü	2000	E7 I Depo Odası	Several example	-	23. KST, Vol. 2, s. 266,272
182	Anzaf Kaleleri	2000	1 No'lu Pithoslu depo odası	Several example	-	23. KST, Vol. 2, s. 276,277
183	Anzaf Kaleleri	2000	2 No'lu Pithoslu depo Odası	Several examples	-	23. KST, Vol. 2, s. 277,278
184	Anzaf Kaleleri	2000	III No'lu depo odası	Several examples	-	23. KST, Vol. 2, s. 278
185	Van-Ayanis	2000	-	Several Pieces	-	23. KST, Vol. 2, s. 289
186	Van-Ayanis	2000	Magazin Alanı	Several examples	-	23. KST, Vol. 2, s. 291
187	Clazomenae	2001	U-V/20-21 Açması	Several examples	Late sixth century B.C.	24. KST, Vol. 1, p. 207
188	Clazomenae	2001	Akropolis Güney Yamacı, Kuyu	Several pieces	Late sixth century B.C.	24. KST, Vol. 1, p. 209
189	Panaztepe	2001	-	One example (middle size)	-	24. KST, Vol. 1, p. 228
190	Panaztepe	2001	-	Several examples (tom b)	-	24. KST, Vol. 1, p. 228,229
191	Ziyaret Tepe	2001	Operation G	Several pieces	-	24. KST, Vol. 1, p. 238
192	Kinet Höyük	2001	-	Several pieces	-	24. KST, Vol. 1, p. 289
193	Oylum Höyük	2001	-	examples	-	24. KST, Vol. 1, p. 346

194	Tralles	2000	GYM-B 2 Açması	One example	-	24. KST, Vol. 1, p. 409
195	Tralles	2000	GYM-B 3 Açması	Several examples	-	24. KST, Vol. 1, p. 410
196	Antandrus	2001	Melis Nekropolü	Several examples	fourth-third Century B.C.	24. KST, Vol. 2, s. 26
197	Claros	2001	6 A 1 Açması	One piece	-	24. KST, Vol. 2, s. 89
198	Troy	2001	Kale Duvarı Batısı	Several examples	Troy VIIa	24. KST, Vol. 2, s. 115
199	Kuşadası Kadı Kalesi	2001	-	Several Pieces	-	24. KST, Vol. 2, s. 128
200	Aezani	2001	-	Example	-	24. KST, Vol. 2, s. 316,320
201	Allianoi	2001	Devlet Ormanı ve 290 No'lu Parsel	Several examples	-	24. KST, Vol. 2, s. 379
202	Van-Yoncatepe Kalesi ve Nekropolü	2001	Akropol F 7 II Odası	Examples	-	24. KST, Vol. 2, s. 387
203	Anzaf Kalesi	2001	-	Several examples	-	24. KST, Vol. 2, s. 395,396
204	Giricano	200-2001	-	Several examples	Bronze Age	24. KST, Vol. 2, s. 451
205	Giricano	200-2001	Gawra B-Uruk	One example	Chalcolithic period	24. KST, Vol. 2, s. 453
206	Doliche	2002	E1 SU 1	example	-	25. KST, Vol. 1, p. 33
207	Troy	2002	zA7 Açması	Several pieces	-	25. KST, Vol. 1, p. 79

208	Aezani	2002	-	Example	-	25. KST, Vol. 1, p. 129,133
209	Ziyaret tepe	2002	Operation G	Several pieces	-	25. KST, Vol. 1, p. 167
210	Kinet Höyük	2002	Medieval/Phase I Operations	One example	-	25. KST, Vol. 1, p. 409
211	Antandrus	2002	Melis nekropolü	Two examples (tomb)	seventh century B.C.	25. KST, Vol. 1, p.456,457
212	Yumuktepe	2002	X Açması	One example	Byzantine period	25. KST, Vol. 1, p. 493
213	Aşağı Yukarı Anzaf Kaleleri	2002	I No'lu Ara koridor	Example	-	25. KST, Vol. 2, s. 30
215	Aşağı ve Yukarı Anzaf Kaleleri	2002	II No'lu ara krodor	Example	-	25. KST, Vol. 2, s. 31
216	Aşağı ve Yukarı Anzaf Kaleleri	2002	III No'lu Ara Koridor	Two Example	-	25. KST, Vol. 2, s. 31
217	Burgaz	2002	3.8.D Açması	One pieces	-	25. KST, Vol. 2, s. 63
218	Clazomenae	2002	-	One example (tomb)	Late Protogeometric period	25. KST, Vol. 2, s. 103
219	Hierapolis	2002	Dorik Avlulu Ev	Several examples	Byzantine period	25. KST, Vol. 2, s. 113
220	Şaraga Höyük	2002	-	Six examples	Early Iron Age	25. KST, Vol. 2, s. 140,141,144
221	Limantepe	2002	-	Several Pieces	-	25. KST, Vol. 2, s. 167
222	Limantepe	2002	A Alanı Sualtı Kazıları	Several Pieces	Early Bronze Age	25. KST, Vol. 2, s. 172

223	Allianoi	2002	Ilıca E5 square	Several Pieces	Late Roman period	25. KST, Vol. 2, s. 218
224	Allianoi	2002	EXI a4, a3, a2, a1, b2 / FX a1, b1 / FVI b5	Several examples	Roman period	25. KST, Vol. 2, s. 220
225	Panaztepe	2002	-	Several examples	-	25. KST, Vol. 2, s. 247,248
226	Metropolis	2002	N-4 Square	Several Pieces	-	25. KST, Vol. 2, s. 293
227	Metropolis	2002	Bademgediği Kalesi / Y-27 square	Several Pieces	-	25. KST, Vol. 2, s. 295
228	Van-Yoncatepe Klaesi ve Nekropolü	2002	Akropol	Several examples	-	25. KST, Vol. 2, s. 353
229	Van-Yoncatepe Kalesi ve Nekropolü	2002	F7 II Alanı	Several examples	-	25. KST, Vol. 2, s. 353
230	Magnesia ad Meandrum	2002	Hypocaustlu Yapı	One example	-	25. KST, Vol. 2, s. 379
231	Aççana Höyük	2003	-	One example	-	26. KST, Vol. 1, p. 47
232	Aşağı ve Yukarı Anzaf Urartu Kaleleri	2003	11 No'lu Salon	Two small examples, one big example	-	26. KST, Vol. 1, p. 177
233	Lagina ve Börükçü	2003	03BS05 Numaralı Sondaj (Dokuma Atölyesi)	One example	Fourth century B.C.	26. KST, Vol. 1, p. 375
234	Lagina ve Börükçü	2003	Urna Mezarlar	Several pieces	Fifth century B.C.	26. KST, Vol. 1, p. 378
235	Clazomenae	2003	H Alanı	Several examples	Late sixth century B.C.	26. KST, Vol. 2, s. 3
236	Clazomenae	2003	I. ve II. Açmalar Kuyu	Several pieces	sixth century B.C.	26. KST, Vol. 2, s. 6

237	Panaztepe	2003	BC	One example (Tomb)	Middle Bronze Age	26. KST, Vol. 2, s. 27
238	Panaztepe	2003	L-K/15 Açmaları	Three examples (tomb)	Middle Bronze Age	26. KST, Vol. 2, s. 27
239	Panaztepe	2003	J/16 Açması	Several examples (tomb)	Bronze Age	26. KST, Vol. 2, s. 28,29
240	Metropolis	2003	Atriumlu Ev (Ada 5) m-8	One example	-	26. KST, Vol. 2, s. 138
241	Yumuktepe	2003	-	Several examples	Medieval	26. KST, Vol. 2, s. 204
242	Çine-Tepecik Höyük	2004	I-11 Açması	Several Pieces	-	27. KST, Vol. 1, p. 20
243	Amorium	2004	XC Açması	Several pieces	-	27. KST, Vol. 1, p. 77
244	Ziyaret Tepe	2004	Operation G	One example	-	27. KST, Vol. 1, p. 120
245	Aşağı ve Yukarı Anzaf Urartu Kaleleri	2004	11 No'lu Oda	Several examples	-	27. KST, Vol. 1, p. 153
246	Panaztepe	2004	-	Several Pieces	Late Roman-Early Byzantine Period	27. KST, Vol. 1, p. 192
247	Panaztepe	2004	-	Several examples (tomb)	Early Bronze Age	27. KST, Vol. 1, p. 193
248	Panaztepe	2004	-	Several Pieces	Late Bronze Age	27. KST, Vol. 1, p. 194
249	Burgaz	2004	SE.8.19.B/8.19.A/8.20.C/ 8.20.D	Several examples	-	27. KST, Vol. 1, p. 212
250	Yenibademli Höyük	2004	-	Several Pieces	-	27. KST, Vol. 1, p. 264

251	Aziz Nikolaos Kilisesi	2004	-	Several Example	11th century	27. KST, Vol. 1, p. 302
252	Antandrus	2004	Melis Nekropolü	Three example	seventh century B.C.	27. KST, Vol. 2, s. 93,97,98
253	Nysa	2004	Kuzey Portikosu	One example	-	27. KST, Vol. 2, s. 133
254	Troy	2004	H6/7 Square	One example	Troy VI	27. KST, Vol. 2, s. 163
255	Lagina ve Börükçü	2004	04BM19, 04BM20	Several examples (tomb)	-	27. KST, Vol. 2, s. 258,260
256	Lagina ve Börükçü	2004	BDA 1 No'lu Dokuma Atölyesi	One example	-	27. KST, Vol. 2, s. 262
257	Lagina ve Börükçü	2004	Kutsal Alan	Several examples	-	27. KST, Vol. 2, s. 263
258	Allianoi	2004	EXIc1 Açması	Several pieces	-	27. KST, Vol. 2, s. 304
259	Clazomenae	2004	Hamdi Balaban Tarlası Sektörü	One example	Fourth century B.C.	27. KST, Vol. 2, s. 366
260	Aezani	2004	Tapınak Platosu	One example	-	27. KST, Vol. 2, s. 401
261	Küllüoba	2005	-	One pieces	Bronze Age	28. KST, Vol. 1, p. 79
262	Ayanis Kalesi	2005	VII No'lu Alan	30 examples	-	28. KST, Vol. 1, p. 125,126
263	Ayanis Kalesi	2005	PP96 Açması	Several pieces	-	28. KST, Vol. 1, p. 129
264	Priene	2005	-	Two examples	-	28. KST, Vol. 1, p. 158,160

265	Amorium	2005	Doğu Açması	One example	ninth century B.C.	28. KST, Vol. 1, p. 279
266	Burgaz	2005	SE.7.5.C, SE.7.5.D	One example	-	28. KST, Vol. 1, p. 303
267	Burgaz	2005	Liman Sektörü/ B-11 Çalışma Alanı	One example	Roman period	28. KST, Vol. 1, p. 313
268	Panaztepe	2005	-	Several Pieces, examples	Bronze Age	28. KST, Vol. 1, p. 402,403
269	Yukarı Anzaf Urartu Kaleleri	2005	14 No'lu Payeli Salon	Several examples	Eighth century B.C.	28. KST, Vol. 1, p. 419,420,423
260	Yoncatepe Sarayı ve Nekropolü	2005	F8 Odası	Several examples	-	28. KST, Vol. 1, p. 446
261	Laodicea-on-the-Lycus	2005	Kuzey Atölyesi	Two example	-	28. KST, Vol. 1, p. 468
262	Adramyttium	2005	E-III Açması	One piece	-	28. KST, Vol. 1, p. 483
263	Adramyttium	2005	Sondaj I	One example	-	28. KST, Vol. 1, p. 485
264	Parium	2005	Nekropol	Several pieces and Examples (tomb)	-	28. KST, Vol. 1, p. 611,613,614,618,621
265	Karacahisar Kalesi	2005	NN-18	Two example	-	28. KST, Vol. 2, s. 1
266	Antandrus	2005	-	Several Examples (tomb)	seventh century B.C.	28. KST, Vol. 2, s. 52,53,
267	St Nicholas Church	2005	D yapısı Kuzey Bölümü	Several examples	-	28. KST, Vol. 2, s. 161
268	St Nicholas Church	2005	-	Several Pieces	Late Roman period	28. KST, Vol. 2, s. 163,

269	St Nicholas Church	2005	-	Several Pieces	Early Byzantine Period	28. KST, Vol. 2, s. 165,166
270	Clazomenae	2005	Açma 4	Two examples (tomb)	-	28. KST, Vol. 2, s. 190
271	Clazomenae	2005	-	Seceral pieces/ examples	-	28. KST, Vol. 2, s. 195
272	Theatre of Nicaea	2005	-	Several pieces	-	28. KST, Vol. 2, s. 391
273	Lagina ve Börükçü	2005	I.Teras	One piece	-	28. KST, Vol. 2, s. 598,605
274	Troy	2005	Kalenin kuzeybatısı, vw3 square	Several examples (hole)	-	28. KST, Vol. 2, s. 705
275	Cyzicus	2006	-	Several examples	-	29. KST, Vol. 1, p. 12,13
276	Cyzicus	2006	Thrakikos Limanı	One example	-	29. KST, Vol. 1, p. 15
277	Tepecik Höyük	2006	N/13 Açması	Several Pieces	-	29. KST, Vol. 1, p. 79
278	Burgaz	2006	SE.6.6.A Açması	Several pieces	End of the seventh century B.C.	29. KST, Vol. 1, p. 131
279	Yukarı Anzaf Urartu Kaleleri	2006	14 No'lu Payeli Salon	Several Examples	-	29. KST, Vol. 1, p. 176-179
280	Yukarı Anzaf Urartu Kaleleri	2006	15 No'lu Oda	One example	-	29. KST, Vol. 1, p. 182
281	Phrygia Hierapolisi	2006	Frontinus Kapısı Bölgesi	One example	-	29. KST, Vol. 1, p. 407,420
282	Amorium	2006	XE Açması Büyük Mekan	Several examples	-	29. KST, Vol. 1, p. 449, 450

283	Alintepe Urartu Kalesi	2006	Apadana	Several examples	-	29. KST, Vol. 1, p. 500,503
284	Tralles	2006	Konut alanı	Several examples	-	29. KST, Vol. 1, p. 564,565
285	Rhodiapolis	2006	-	Several Pieces	Byzantine Period	29. KST, Vol. 2, s. 6,7
286	Panaztepe	2006	IV. Tabaka	Several Pieces	Bronze Age	29. KST, Vol. 2, s. 24
287	St Nicholas Church	2006	D Yapısı Kuzey bölüm	Several Pieces	-	29. KST, Vol. 2, s. 141
288	St Nicholas Church	2006	-	Several Pieces	Byzantine Period	29. KST, Vol. 2, s. 143,144
289	Nysa	2006	Agora	Several Pieces	-	29. KST, Vol. 2, s. 210
290	Resuloğlu Mezarlık	2006	-	Several examples (tomb)	Bronze Age	29. KST, Vol. 2, s. 444,446
291	Antandrus	2006	Melis Nekropolü	Several Pieces and examples	-	29. KST, Vol. 2, s. 468
292	Laodicea-on-the-Lycus	2006	Suriye Caddesi	Several Pieces	-	29. KST, Vol. 3, s. 101
293	Laodicea-on-the-Lycus	2006	13/14 No'lu plankare	Several pieces	-	29. KST, Vol. 3, s. 105,106
294	Limantepe	2006	-	Several pieces	Proto-geometric Period	29. KST, Vol. 3, s. 224,226,229,230-232,234
295	Lagina ve Börükçü	2006	-	Several examples (tomb)	5.-Fourth century B.C.	29. KST, Vol. 3, s. 401
296	Annaea-Kadıkalesi	2006	S30 Açması	Several example	-	29. KST, Vol. 3, s. 451,457

297	Annaea-Kadikalesi	2006	S31 Açması	Several pieces	-	29. KST, Vol. 3, s. 457
298	Erzurum Kale	2006	H8 Açması	Several examples	-	29. KST, Vol. 3, s. 497
299	Adramyttium	2006	-	Several examples	-	29. KST, Vol. 3, s. 534
300	Çadır Höyük	2006	-	Several examples (tom b)	-	29. KST, Vol. 3, s. 580,587
301	Altın-tepe Urartu Kalesi	2007	Apana	Several example	-	30. KST, Vol. 1, p. 122,123
302	Altın-tepe Urartu Kalesi	2007	Kuzey Yamaç Orta Teras	One example	-	30. KST, Vol. 1, p. 130
303	Cyzicus	2007	-	One pieces	-	30. KST, Vol. 1, p. 165
304	Amorium	2007	A20 Alanı	Several example	Late eighth–ninth century	30. KST, Vol. 1, p. 202
305	Çine Tepecik Höyük	2007	L/11 Açması	One example	Early Bronze Age	30. KST, Vol. 1, p. 228
306	Pessinus	2007	E Bölgesi	Several Example	-	30. KST, Vol. 1, p. 295
307	Limantepe	2007	-	Several Pieces	Bronze Age	30. KST, Vol. 1, p. 302
308	Limantepe	2007	E Alanı	Several Pieces	-	30. KST, Vol. 1, p. 310,311
309	Yukarı Anzaf Urartu Kalesi	2007	15 No'lu Büyük kabul Salonu	Several example	-	30. KST, Vol. 1, p. 455
310	Panaztepe	2007	-	One example	-	30. KST, Vol. 1, p. 478,485,487

311	Claros	2007	K15 square	Several Pieces	-	30. KST, Vol. 2, s. 116
312	Kavuşan Höyük	2007	G12 Açması	One example	Assur / Mitanni	30. KST, Vol. 2, s. 207,208
313	Erzurum Kale	2007	J8 Açması	Several Example	Medieval	30. KST, Vol. 2, s. 225
314	Ani	2007	-	One pieces	-	30. KST, Vol. 2, s. 304
315	Laodicea-on-the-Lycus	2007	A evi	Several example	Fourth– Fifth century	30. KST, Vol. 2, s. 415
316	Kubad-abad	2007	Dikdörtgenli yapı	Several Examples	-	30. KST, Vol. 2, s. 474
317	Assos	2007	Nekropol	Several examples	-	30. KST, Vol. 3, s. 106,108
318	Yumuktepe	2007	-	Several examples	-	30. KST, Vol. 3, s. 154
319	Kilisetepe	2007	Room 1	examples	-	30. KST, Vol. 3, s. 211
320	Clazomenae	2007	-	Two examples (tomb)	sixth century B.C.	30. KST, Vol. 3, s. 236
321	Pedasa	2007	M-1 Mekanı	Several examples	Archaic period	30. KST, Vol. 3, s. 268,269
322	Pedasa	2007	Batı nekropolis	Several pieces	-	30. KST, Vol. 3, s. 277
323	Kilisetepe	2007	-	One example	-	30. KST, Vol. 4, s. 61
324	Tripolis	2007	Roma Caddesi	One example	6.-seventh century	30. KST, Vol. 4, s. 116,117

325	Erythrae	2007	-	Several Pieces	-	30. KST, Vol. 4, s. 145
326	St Nicholas Church	2007	Dolgu Alan	Two examples	Late Roman – early Byzantine	30. KST, Vol. 4, s. 160,164
327	Magnesia ad Meandrum	2007	Kuzey Çeşmeler ve havuzlar	One example	-	30. KST, Vol. 4, s. 396
328	Ayanis Kalesi	2008	-	One example	-	31. KST, Vol. 1 s. 6
329	Ayanis Kalesi	2008	NN70a+b plankare	One example	-	31. KST, Vol. 1 s. 19
330	Pirene	2008	-	One example	-	31. KST, Vol. 1 s. 32
331	Priene	2008	D2 İnsulası 20 No'lu Açma	One piece	-	31. KST, Vol. 1 s. 44
332	Kilise Tepe	2008	-	One example	Iron Age	31. KST, Vol. 1 s. 166
333	Dülük Baba Tepesi	2008	-	Example	-	31. KST, Vol. 1 s. 444
334	Çine Tepecik	2008	H 12 Açması	Several Pieces	Late Bronze Age	31. KST, Vol. 1 s. 461
335	Çine Tepecik	2008	J 12 Açması	Several Pieces	Late Bronze Age	31. KST, Vol. 1 s. 463,464
336	Çine Tepecik	2008	X/c-d, J 12 Açması	One pieces	Middle Bronze Age	31. KST, Vol. 1 s. 464,465
337	Altın-tepe Urartu Kalesi	2008	Apadana / Kabul Salonu	Two Example	Urartu Dönemi	31. KST, Vol. 2 s. 21,22
338	Panaztepe	2008	-	Several examples (tomb)	Late Bronze Age	31. KST, Vol. 2 s. 102-104

339	Troy	2008	-	One example	Troy VI	31. KST, Vol. 2 s. 170
340	Troy	2008	H 126 Açması	One Piece	Late Bronze Age	31. KST, Vol. 2 s. 172,173
341	Phrygian Hierapolis	2008	Büyük Yapı Alanı	One example	-	31. KST, Vol. 2 s. 217
342	Soloi-Pompeiopolis	2008	Soli Höyük G9 Açması	Several Pieces	14. Century B.C.	31. KST, Vol. 2 s. 335
343	Smyrna	2008	Şifa Hospital	Several example	Roman period	31. KST, Vol. 2 s. 420
344	Ani	2008	-	Several Pieces	-	31. KST, Vol. 3 s. 162
345	Yumuktepe	2008	Trenches to the east to Church	Example	Medieval	31. KST, Vol. 3 s. 338
346	Yumuktepe	2008	İn the Northwest Part of the Peak	Example	Medieval	31. KST, Vol. 3 s. 341
347	Oluz Höyük	2008	C Açması	One example	-	31. KST, Vol. 3 s. 387
348	Tatarlı Höyük	2008	A Yapısı	One example	Late Bronze Age	31. KST, Vol. 3 s. 457,458
349	Tatarlı Höyük	2008	Sitadel Kuzey Basamaklı Açmaları	One example	Bronze Age	31. KST, Vol. 3 s. 465
350	Börükçü	2008	-	Two examples (Tomb)	Bronze Age	31. KST, Vol. 3 s. 513
351	Belentepe	2008	-	Several examples (tomb)	Bronze Age	31. KST, Vol. 3 s. 516
355	Antandrus	2008	Nekropolis	Three Example (Tomb)	Fourth century B.C.	31. KST, Vol. 4. s. 9,11-13,16

356	Laodicea-on-the-Lycus	2008	Kuzey Bazilikası	One example	Byzantine period	31. KST, Vol. 4. s. 115
357	Kavuşan Höyük	2008	F 12 Açması	Several Pieces	-	31. KST, Vol. 4. s. 183
358	Erythrae	2008	-	Example	17th-19th centuries	31. KST, Vol. 4. s. 389
359	St Nicholas Church	2008	-	Several Examples	Late Roman period	31. KST, Vol. 4. s. 424
360	Çine Tepecik	2009	L/12 Açması	Several Pieces	Late Bronze Age	32. KST, Vol. 1. s. 70,71
361	Çine Tepecik	2009	K 13 Açması	Several examples	-	32. KST, Vol. 1. s. 73
362	Iasos	2009	Building 1	One example	-	32. KST, Vol. 1. s. 177
363	Cyzicus	2009	Hadrianus Tapınağı	Three Example	Medieval	32. KST, Vol. 1. s. 188
364	Alara	2009	Aşağı Hamam C Açması	Several examples	Roman period	32. KST, Vol. 1. s. 205
365	Gülpınar	2009	Glp09/01 No'lu sondaj	Several Pieces	Roman period	32. KST, Vol. 1. s. 213
366	Gülpınar	2009	Hizmetli Koridoru	One example	-	32. KST, Vol. 1. s. 216
367	Parium	2009	-	One example	-	32. KST, Vol. 1. s. 285
368	Dülük Baba Tepesi	2009	-	One example	-	32. KST, Vol. 1. s. 320
369	Burgaz	2009	-	One pieces	fourth Century B.C.	32. KST, Vol. 1. s. 427

370	Altıntepe Urartu Kalesi	2009	Apadana	Three example	-	32. KST, Vol. 2. s. 165
371	Altıntepe Urartu Kalesi	2009	Tapınak Kompleksinin doğusu	Several Examples	-	32. KST, Vol. 2. s. 167
372	Troy	2009	-	Several Examples	-	32. KST, Vol. 2. s. 250
373	Dilek Dağları	2009	-	One example	seventh century B.C.	32. KST, Vol. 2. s. 338
374	Lagine ve Börükçü	2009	Kumyer Mevkii	Several examples (tom b)	Bronze Age	32. KST, Vol. 2. s. 385-387
375	St Nicholas Church	2009	Piskoposluk Batısı	Several examples, pieces	-	32. KST, Vol. 2. s. 397
376	Olympos	2009	-	Several examples	Early Byzantine period	32. KST, Vol. 3. s. 87
377	Antandrus	2009	Melis Nekropolü	One example (tomb no. 38)	sixth century B.C.	32. KST, Vol. 3. s. 104
378	Antandrus	2009	-	One example (tomb)	sixth century B.C.	32. KST, Vol. 3. s. 105,107
379	Antandrus	2009	Güneydöpu I Açması	Six example (tomb)	sixth Century B.C.	32. KST, Vol. 3. s. 111
380	Tyana / Kemerhisar	2009	-	One example	fifth-sixth century	32. KST, Vol. 3. s. 209
381	Balıcaoluk	2009	-	Several Pieces	-	32. KST, Vol. 3. s. 415
382	Kilise Tepe	2009	-	Several Pieces	Byzantine period	32. KST, Vol. 3. s. 429
383	Laodicea-on-the-Lycus	2009	-	Several Pieces	Early Byzantine period	32. KST, Vol. 3. s. 457

384	Oluz Höyük	2009	Mimari tabaka	Two Example	-	32. KST, Vol. 4. s. 94,100
385	Aenus	2009	ST4-M8	One example (tomb)	-	32. KST, Vol. 4. s. 152
386	Aenus	2009	ST5-M6	Two examples (Tomb)	seventh-fifth Cent. B.C.	32. KST, Vol. 4. s. 157
387	Aenus	2009	ST5-M7	One example (tomb)	Early Classical period	32. KST, Vol. 4. s. 157
388	Aenus	2009	ST5-M11	One example	Classical period	32. KST, Vol. 4. s. 158
389	Aenus	2009	ST5-M21	One example (tomb)	Classical period	32. KST, Vol. 4. s. 160
390	Aenus	2009	ST6 No'lu Açma	One example	-	32. KST, Vol. 4. s. 161
391	Clazomenae	2009	Savunma Duvarı	One example (tomb)	Tenth cent. B.C.	32. KST, Vol. 4. s. 170
392	Clazomenae	2009	Açma 19	Several example (tomb)	Tenth cent. B.C.	32. KST, Vol. 4. s. 172
393	Clazomenae	2009	Açma 12 Güneybatı köşe	One example (tomb)	Protogeometric Period	32. KST, Vol. 4. s. 173,174
394	Pedasa	2009	Mekan	Several Example	Byzantine period	32. KST, Vol. 4. s. 328
395	Limantepe	2009	U-6, T-6 Açmaları	Several Pieces	Bronze Age	32. KST, Vol. 4. s. 447
396	Limantepe	2009	E alanı	Several Pieces	Bronze Age	32. KST, Vol. 4. s. 452
397	Pessinus	2010	Secxtor R, Trench R1	Several examples	-	33. KST, Vol. 1. s. 110

398	Gülpınar / Smintheium	2010	Hamam	Several Pieces	Roman period	33. KST, Vol. 1. s. 155
399	Antandrus	2010	Kuzey Genişleme	One example	seventh cent. B.C.	33. KST, Vol. 1. s. 282,284
400	Antandrus	2010	Güneydoğu II Açması	Two examples (tomb)	Roman period	33. KST, Vol. 1. s. 285,286
401	Myndos	2010	-	Several fragments	-	33. KST, Vol. 1. s. 344
402	Maydos Kilisetepe	2010	D4.3 karesi	Several fragments	-	33. KST, Vol. 1. s. 394
403	Panaztepe	2010	-	Several pieces	Bronze Age	33. KST, Vol. 1. s. 423-425,429
404	Dascylium	2010	-	One example	Byzantine period	33. KST, Vol. 1. s. 523
405	Çine Tepecik	2010	K 12 Açması	Several Pieces	Bronze Age	33. KST, Vol. 2. s. 22
406	Çine Tepecik	2010	K/11 K/12	Several Pieces	Bronze Age	33. KST, Vol. 2. s. 25
407	Yeşilova Höyüğü	2010	-	Several Pieces	-	33. KST, Vol. 2. s. 46
408	Kubad-Abad	2010	-	Two examples (tomb)	Bronze Age	33. KST, Vol. 2. s. 210
409	Burgaz	2010	BZ.10.SE.11.5.D Açması	Examples	-	33. KST, Vol. 2. s. 272
410	Burgaz	2010	BZ.10.SE.9.4.B Açması	Several examples	-	33. KST, Vol. 2. s. 275
411	Metropolis	2010	M6 plankare	One example	First-second centuries AD	33. KST, Vol. 2. s. 314

412	Annaea-Kadikalesi	2010	Orta Nef	Several pieces	-	33. KST, Vol. 2. s. 361,362
413	Tarsus-Gözlükule	2010	-	One example	Prehistoric	33. KST, Vol. 2. s. 421
414	Lagina	2010	Kuzey Stoa	Three example	-	33. KST, Vol. 2. s. 440,442
415	Patara	2010	21.23.25 No'lu sondaj	Several examples	Roman period	33. KST, Vol. 3. s. 26
416	Gelidonya Shipwreck	2010	-	One pieces	-	33. KST, Vol. 3. s. 117-119
417	Bayraklı Höyüğü	2010	Çeşme Kuzey Cephe Duvarı	One example (tomb)	-	33. KST, Vol. 3. s. 136
418	Karamattepe	2010	-	One example	eighth/seventh cent. B.C.	33. KST, Vol. 3. s. 148,150
419	Amasya-Harşena Kalesi ve Kızlar Sarayı	2010	D açması	One pieces	Roman period	33. KST, Vol. 3. s. 274
420	Alaca Höyük	2010	-	One example	Bronze Age	33. KST, Vol. 3. s. 288
421	Altıntepe Urartu Kalesi	2010	Tapınak Kompleksi Doğusu	Several example	-	33. KST, Vol. 3. s. 304,305
422	Altıntepe Urartu Kalesi	2010	Apadana	Several examples (tomb)	-	33. KST, Vol. 3. s. 306
423	Hırbemerdon	2010	-	One pieces	Bronze Age	33. KST, Vol. 3. s. 344
424	Van-Tuşpa Aşağı Yerleşmesi Van Kalesi	2010	-	One example	seventh cent. B.C.	33. KST, Vol. 3. s. 418
425	Pedasa	2010	Mekan 43b	One example	-	33. KST, Vol. 4. s. 169

426	Sardis	2010	-	One example (tomb)	-	33. KST, Vol. 4. s. 214
427	Claros	2010	N13 O13plankare	Several Pieces	-	33. KST, Vol. 4. s. 294
428	Beycesultan	2010	2. Tabaka	Several examples	-	33. KST, Vol. 4. s. 309
429	Beycesultan	2010	-	Several Pieces	Byzantine period	33. KST, Vol. 4. s. 310
430	Stratonikeia	2010	Yüzey araştırması	Several Examples	Bronze Age	33. KST, Vol. 4. s. 409
431	Büklükale	2010	-	Several examples	14th Cent. B.C.	33. KST, Vol. 4. s. 425
432	Limantepe	2010	-	Several Pieces	-	33. KST, Vol. 4. s. 480
433	Laodicea-on-the-Lycus	2010	Sondaj 5	Several Pieces	Bronze Age	33. KST, Vol. 4. s. 587
435	Yeşil Ova Höyüğü	2011	114 115 plankare	One example	Bronze age	34. KST, Vol. 1. s. 123
436	Beycesultan	2011	2. Tabaka	Three example	Byzantine period	34. KST, Vol. 1. s. 218
437	Beycesultan	2011	5. Tabaka	Several example	Late Bronze Age	34. KST, Vol. 1. s. 218,219,221
438	Yassı Höyük	2011	-	Several examples	Bronze Age	34. KST, Vol. 1. s. 315
439	Oylum Höyük	2011	L22 Açması	Several Pieces	Late Bronze age	34. KST, Vol. 1. s. 327
440	Karkemish	2011	-	Several examples	seventh Cent B.C.	34. KST, Vol. 1. s. 354

441	Çine Tepecik	2011	K/11 Açması	Several Pieces, examples	Bronze Age	34. KST, Vol. 1. s. 378,379
442	Çine Tepecik	2011	K/12 Açması	Several examples	Bronze Age	34. KST, Vol. 1. s. 379,380
443	Kınık Höyük	2011	Operation B	One examples	-	34. KST, Vol. 1. s. 390
444	Sirkeli Höyük	2011	-	Several pieces	Bronze Age	34. KST, Vol. 1. s. 416
445	Maydos Kilisetepe	2011	D sondajı	Two example	-	34. KST, Vol. 2. s. 51,52
446	Altın-tepe Urartu Kalesi	2011	Kuzey Sur dışı	Several Pieces	-	34. KST, Vol. 2. s. 138,139
447	Clazomenae	2011	-	One example (tomb)	Bronze age	34. KST, Vol. 2. s. 193
448	Klazomenia	2011	-	Several example	fourth centurt B.C.	34. KST, Vol. 2. s. 199
449	Teos	2011	S 12 sondajı	One example	eighth-seventh Cen. B.C.	34. KST, Vol. 2. s. 215,216
450	Annaea-Kadıkalesi	2011	II. sektör V-24 plankare	One example	-	34. KST, Vol. 2. s. 280
451	Cyzicus	2011	-	Several example	Medieval	34. KST, Vol. 2. s. 339
452	Parium	2011	1540-2305	One example	fifth-fourth cent. B.C.	34. KST, Vol. 2. s. 349
453	Paİron	2011	1375-1345	Several Pieces	-	34. KST, Vol. 2. s. 354
454	Aenus	2011	-	Three example	Roman period	34. KST, Vol. 2. s. 376

455	Labraunda	2011	Kule	Several Pieces	third Cent. B.C.	34. KST, Vol. 2. s. 457
456	Labraounda	2011	5B Alanı	Several Pieces	third Cent. B.C.	34. KST, Vol. 2. s. 461
457	Burgaz	2011	BZ.11.SE.12.4.D Açması	One example	Fourth cent. B.C.	34. KST, Vol. 3. s. 13
458	Myndos	2011	D1-A Açması	Several Pieces	-	34. KST, Vol. 3. s. 28,29
459	Myndos	2011	D1-B Açması	One example	Roman period	34. KST, Vol. 3. s. 30
460	Myndos	2011	6 Numaralı Açma	One example	Byzantine period	34. KST, Vol. 3. s. 32
461	Tlos	2011	Köy Tarlası	Several Example	First-second Cent.	34. KST, Vol. 3. s. 195
462	Filyos-Tium	2011	5/25-16 Açması	Several Example	Classical- Hellenistic Period	34. KST, Vol. 3. s. 306
463	Mersin-Silifke	2011	A-8/2 Açması	Several Example	-	34. KST, Vol. 3. s. 397
464	Şavşat Kalesi	2011	Şapel ve Çevresi	Several Example	-	34. KST, Vol. 3. s. 438
465	Gökçeada-Yenibademli Höyük	2012	D.G9 Açması	Several Pieces	Bronze age	35. KST, Vol. 1. s. 20
466	Gülpınar	2012	-	Several pieces	-	35. KST, Vol. 1. s. 140
467	Ayanis	2012	2 Nolu Mekan	One Pieces	Medieval	35. KST, Vol. 1. s. 176,177,179
468	Yassitepe	2012	VI NO'lu Alan	Several pieces	Bronze age	35. KST, Vol. 1. s. 422

467	Panaztepe	2012	3. Yapı Katı	Several Pieces	fourth Cent. B.C.	35. KST, Vol. 2. s. 26-28
469	Çine Tepecik	2012	-	Several example	Bronze age	35. KST, Vol. 2. s. 112,113
470	Tarsus Gözlükule	2012	-	Several example	Late Bronze Age	35. KST, Vol. 2. s. 173
471	Filyos-Tium	2012	Antik Liman	Several pieces	-	35. KST, Vol. 2. s. 233
472	Sagalassus	2012	Alan F	One example	Hellenistic period	35. KST, Vol. 2. s. 248
473	Kırşehir Kale Höyük	2012	H3 Açması	Several Pieces	-	35. KST, Vol. 2. s. 298
474	Aezani	2012	L6B Açması	Several Example	-	35. KST, Vol. 2. s. 328
475	Esk Van Şehri Kalesi ve Höyüğü	2012	-	One example -	-	35. KST, Vol. 2. s. 363
476	Myndos	2012	-	One pieces	Hellenistic period	35. KST, Vol. 2. s. 403
477	Kınık Höyük	2012	-	Several examples	seventh Cent. B.C.	35. KST, Vol. 3. s. 44
478	Laodicea-on-the-Lycus	2012	Kuzey Agora	Several pieces	fourth-fifth Cent.	35. KST, Vol. 3. s. 85
479	Şavşat Kalesi	2013	E3 F3 kareleri	Ten example	-	36. KST, Vol. 1. s. 62
480	Altın-tepe Urartu Klaesi	2013	Taş Yapı	Several pieces	-	36. KST, Vol. 1. s. 138
481	Cyzicus	2013	32 H Açması	Several examples	Medieval	36. KST, Vol. 1. s. 193

482	Ziyaret Tepe	2013	Operation W	Several examples	-	36. KST, Vol. 1. s. 263
483	Maydos Kilisetepe	2013	-	One example	Troy V	36. KST, Vol. 1. s. 320
484	Maydos Kilisetepe	2013	D3.4 Açması	Example(pit)	Bronze Age	36. KST, Vol. 1. s. 321
485	Soloi-Pompeiopolis	2013	E7 Plankaresi	Several examples	Late Hellenistic-Early Roman	36. KST, Vol. 1. s. 352,353
486	Sebastopolis	2013	-	One example	-	36. KST, Vol. 1. s. 482
487	Ulucak Höyük	2013	-	Three examples	Chalcolithic Period	36. KST, Vol. 1. s. 586
488	Tlos	2013	Stadyum Alanı	Several pieces	-	36. KST, Vol. 1. s. 637
489	Aphrodisias	2013	NA 13.1	Several examples	Early Ottoman Period	36. KST, Vol. 2. s. 78
490	Hastane Höyük	2013	-	Several pieces	Bronze Age	36. KST, Vol. 2. s. 124
491	Pompeiopolis	2013	A 10 Açması	Several pieces	-	36. KST, Vol. 2. s. 201
492	Çine Tepecik	2013	1.Kültür Tabakası	Several examples	Bronze Age	36. KST, Vol. 2. s. 288,289
493	Bademgediği Tepe	2013	-	Several examples	Bronze Age	36. KST, Vol. 2. s. 330
494	Yeşilova Höyüğü	2013	VI No'lu alan Yasstepe	Several examples	-	36. KST, Vol. 2. s. 454-457
495	Kınık Höyük	2013	D Açması	Several examples	Hellenistic Period	36. KST, Vol. 2. s. 502

496	Adramyttium	2013	E Bölgesi	Several examples	Medieval	36. KST, Vol. 3. s. 8
497	Aenus	2013	-	Eight Examples (tomb)	-	36. KST, Vol. 3. s. 214
498	Kırşehir Kale	2013	-	Several examples	-	36. KST, Vol. 3. s. 258,259,262,263
499	Pedasa	2013	-	One example	-	36. KST, Vol. 3. s. 342,348
500	Oluz Höyük	2013	4 B Mimari Tabakası	One example	-	36. KST, Vol. 3. s. 368
501	Mersin-Silifke	2013	A5-13 Mekan	One example	-	36. KST, Vol. 3. s. 394
502	Mersin-Silifke	2013	A21-Mekanı 1. Yol Güney A koridoru 3 Nolu mekan	Two pieces	-	36. KST, Vol. 3. s. 400
503	Parium	2013	Güney Nekropolü	One example (tomb)	Archaic period	36. KST, Vol. 3. s. 415
504	Parium	2013	1540-2290 Açması	One example (tomb)	seventh Cent. B.C.	36. KST, Vol. 3. s. 415
505	Parium	2013	Yamaç Yapısı	One example	-	36. KST, Vol. 3. s. 423
506	Liman Tepe	2013	F alanı	Several Pieces	Roman period	36. KST, Vol. 3. s. 483
507	Laodicea-on-the-Lycus	2013	KandilKırı yerleşmesi ve prehistorik mezarlık	One example (tomb)	-	36. KST, Vol. 3. s. 636,637
508	Zerzevan Kalesi	2014	Mekan 3 (AT-31)	Several Pieces	third Cent. B.C.	37. KST, Vol. 1. s. 109
509	Yeşilova Höyüğü	2014	Yassitepe H19 plankare	Several pieces	-	37. KST, Vol. 1. s. 164

510	Çine Tepecik	2014	K/10-11 L/10 Açması	One example	Late Bronze Age	37. KST, Vol. 1. s. 205
511	Şavşat Kalesi	2014	D4 E4 Plankare	Several examples	-	37. KST, Vol. 1. s. 293
512	Tlos	2014	-	Five examples	Roman period	37. KST, Vol. 1. s. 407
513	Filyos-Tium	2014	Akropol Doğu Sektörü	Several examples	-	37. KST, Vol. 2. s. 15
514	Pompeiopolis	2014	-	One example	Roman period	37. KST, Vol. 2. s. 146
515	Kaymakçı	2014	-	Several Pieces	Bronze Age	37. KST, Vol. 2. s. 246,253,255,
516	Kınık Höyük	2014	Operation A Sector A2	Example	-	37. KST, Vol. 2. s. 306,315
517	Assos	2014	-	Several pieces	Archaic period	37. KST, Vol. 2. s. 353
518	Panaztepe	2014	C Yapısı	Several Pieces	fourth Cent. B.C.	37. KST, Vol. 2. s. 427,429
519	Panaztepe	2014	Maltepe Köyü Mezarlığının kuzeyi	One example	Bronze age	37. KST, Vol. 2. s. 431
520	Tatarlı Höyük	2014	A yapısı	Several Example	Bronze Age	37. KST, Vol. 2. s. 492,493
521	Clazomenae	2014	HBT Sektörü	Several examples	-	37. KST, Vol. 2. s. 519,522
522	Soli-Pompeiopolis	2014	E6 Açması	Two example	Rome nPeriod	37. KST, Vol. 3. s. 112
523	Beycesultan	2014	N28	Several examples	Byzantine period	37. KST, Vol. 3. s. 184

524	Adramyttium	2014	E Bölgesi	Several pieces	Byzantine period	37. KST, Vol. 3. s. 238
525	Antandrus	2014	Kuzey Genişleme	Two examples (Tomb)	third cent. B.C.	37. KST, Vol. 3. s. 351
526	Antandrus	2014	Güney Genişleme	Two Examples (tomb)	sixth-fifth cent. B.C.	37. KST, Vol. 3. s. 353-355
527	Teos	2014	Nekropol	Several examples (Tomb)	-	37. KST, Vol. 3. s. 466
528	Parium	2015	Agora ve Dükkanlar	One example	fifth-sixth Cent.	38. KST, Vol. 1. s. 31
529	Doliche	2015	15 02 Açması	One pieces	Roman period	38. KST, Vol. 1. s. 52
530	Gökçeada Yenibademli Höyük	2015	G 10 Kuzey Açması	Several Pieces	-	38. KST, Vol. 1. S. 78
531	Zerzevan Kalesi	2015	Room 2	Several Pieces	Roman period	38. KST, Vol. 1. s. 130
532	Tlos	2015	Stadyum Alanı	Two examples	Bronze Age	38. KST, Vol. 1. s. 410
533	Claros	2015	GH 16 Plankare	Several Pieces	seventh Cent B.C.	38. KST, Vol. 1. s. 431
534	Olba	2015	Akropolis Zirve	Several Pieces	-	38. KST, Vol. 2. s. 10
535	Yeşilova Höyüğü	2015	Room 3	Several examples	-	38. KST, Vol. 2. s. 148,149
536	Nif	2015	Balıcaoluk	Several examples	-	38. KST, Vol. 2. s. 343

537	Pompeiopolis	2015	A sektörü	Several pieces	fifth Cent.	38. KST, Vol. 2. s. 456
538	Pompeiopolis	2015	G Sektörü (Tapınak)	Several examples	-	38. KST, Vol. 2. s. 460
539	Pompeiopolis	2015	M Sektörü	One example	-	38. KST, Vol. 2. s. 461,462
540	Çine Tepecik	2015	-	Several Pieces	Bronze Age	38. KST, Vol. 3. s. 242,243
541	Aenus	2015	Su Terazisi Nekropolü	Two examples	Archaic Period	38. KST, Vol. 3. s. 416,418
542	Büklükale	2015	-	Several examples	-	38. KST, Vol. 3. s. 518
543	Çine Tepecik	2016	N/10-11 , M/N-12	Several pieces	Bronze age	39. KST, Vol. 1. s. 103,104
544	Çakırbeyli-Küçüktepe	2016	D 5 Açması	One Example	-	39. KST, Vol. 1. s.117-124
545	Sagalassus	2016	Kütüphanenin doğusu	Several example	-	39. KST, Vol. 1. s. 225
546	Tripolis	2016	Kuzey Nekropolü	Several pieces	third-fourth Cent.	39. KST, Vol. 1. s. 272
547	Pompeiopolis	2016	V sektörü	Several Pieces	9th.-11th Cent.	39. KST, Vol. 2. s. 207
548	Pompeiopolis	2016	A sektörü	Several example	-	39. KST, Vol. 2. s. 211,212
549	İznik Roma Tiyatrosu	2016	Galeri 2	One example	-	39. KST, Vol. 2. s. 289
550	Panaztepe	2016	1-16 Açması	Several pieces	Bronze Age	39. KST, Vol. 2. s. 350

551	Smyrna	2016	Hamam	Several Examples	Roman period	39. KST, Vol. 2. s. 432
552	Kırşehir Kale Höyük	2016	-	Several Pieces	Iron Age	39. KST, Vol. 3. s. 18,20
553	Stratonikeia	2016	Gymnasion	One example	Roman period	39. KST, Vol. 3. s. 57,58
554	Van Çavuştepe	2016	Depo 1 Depo 2	Several example	-	39. KST, Vol. 3. s. 189-192,196
555	Gevale Kalesi	2016	G27 Açması	Several Pieces	-	39. KST, Vol. 3. s. 253
556	Balıcaoluk	2016	-	Several Pieces	Hellenistic Period	39. KST, Vol. 3. s. 310
557	Resuloğlu	2016	-	Several Pieces	-	39. KST, Vol. 3. s. 357
558	Assos	2016	Aşağı Agora Bizans Yapısı	Several examples	Byzantine period	39. KST, Vol. 3. s. 394
559	Ayasuluk Tepesi ve Aziz Yuhanna Kilisesi	2016	AT AU odalarının doğusu	Several examples	-	39. KST, Vol. 3. s. 463,464
560	Antandrus	2016	Nekropolis Sektörü	Examples (tomb)	-	39. KST, Vol. 3. s. 484-492
561	Pedasa	2017	-	Several Pieces	eighth-seventh Cent B.C.	40. KST, Vol. 1. s. 21,28
562	Silifke Kalesi	2017	A 14 Burcu	Several Pieces	-	40. KST, Vol. 1. s. 132
563	Boğazköy Hattuşa	2017	-	Several Pieces	-	40. KST, Vol. 1. s. 180
564	Tripolis	2017	Agora Güney Portiği	Several pieces	1th. Cent.	40. KST, Vol. 1. s. 330

565	Gülpınar Smintheion	2017	-	Several Pieces	Roman period	40. KST, Vol. 1. s. 518
566	Giresun adası	2017	Pithoslu alan	Several examples	-	40. KST, Vol. 2. s. 135-139
567	Gökçeada-Yenibademli	2017	G 10 Açması	Several examples	-	40. KST, Vol. 2. s. 255
568	Sardis	2017	-	Several pieces	-	40. KST, Vol. 3. s. 105
569	Çine Tepecik	2017	-	Several example	Bronze age	40. KST, Vol. 3. s. 417
570	Çine Tepecik	2017	N/10 N/11 Açması	Several example	-	40. KST, Vol. 3. s. 418,419
571	Çine Tepecik	2017	O/10	Several Pieces	-	40. KST, Vol. 3. s. 421
572	Derekutuğun	2017	-	Several examples	-	40. KST, Vol. 3. s. 563
573	Parium	2017	-	Several examples (tomb)	seventh cent. B.C.	40. KST, Vol. 3. s. 597
574	Kurul Kalesi	2017	CN-110 CN-111	Several examples	-	40. KST, Vol. 3. s. 699
575	Euromos	2018	-	Several Examples (tomb)	Hellenistic Period	41. KST, Vol. 1. s. 24
576	Pedasa	2018	-	Several pieces	-	41. KST, Vol. 1. s. 40
577	Gevale Kalesi	2018	G-38 Açması	Several pieces	-	41. KST, Vol. 1. s. 68
578	Silifke Kalesi	2018	A-4 Tonozlu Mekan	Several Pieces	-	41. KST, Vol. 1. s. 116

579	Panaztepe	2018	mezarlık	Several examples (tomb)	Bronze Age	41. KST, Vol. 1. s. 189
580	Gülpınar Sminthe,on	2018	-	Several example	sixth cent. B.C.	41. KST, Vol. 1. s. 490
581	Eski Van Şehri Kalesi ve Höyüğü	2018	M24 açması	Several pieces	-	41. KST, Vol. 2. s. 71
582	Beycesultan	2018	-	Several examples	Byzantine period	41. KST, Vol. 2. s. 114
583	Antandrus	2018	Necropolis area	Several examples	-	41. KST, Vol. 2. s. 263-269
584	Gökçeada-Yenibademli Höyük	2018	-	Several examples	-	41. KST, Vol. 2. s. 296
585	Pedasa	2019 2020	-	Several Pieces	seventh century B.C.	2019-2020, Vol. 1. s. 40
586	Boğazköy-Hattuşa	2019 2020	-	Several examples	-	2019-2020, Vol. 1. s. 110
587	Oylum Höyük	2019 2020	M 24 Açması	Several Pieces	Iron Age	2019-2020, Vol. 1. s. 178
588	Tripolis	2019 2020	Doğu Sokak	Several Pieces	fifth cent.	2019-2020, Vol. 1. s. 286
589	Nif	2019	Ab 34 B	Several Pieces	-	2019-2020, Vol. 2. s. 40
590	Syedra	2020	Burial chamber 1	Example (tomb)	-	2019-2020, Vol. 2. s. 292
591	Issos Epiphanea	2020	-	Several Examples	-	2019-2020, Vol. 2. s. 411
592	Pisidian Antioch	2019 2020	-	One example	Byzantine period	2019-2020, Vol. 3. s. 88

593	Anemurium	2019 2020	-	Several Pieces	-	2019-2020, Vol. 3. s. 116
594	St Nicholas Church	2019 2020	-	Several example	Byzantine period	2019-2020, Vol. 4. s. 181
595	Satala	2019 2020	C1 Açması	Several pieces	-	2019-2020, Vol. 4. s. 267

Table 1: Excavated pithoi and other examples from the surveyed sites of the Greek, Roman and Byzantine periods in Turkey, in alphabetical order.

Main references

- AST *Eski Eserler ve Müzeler Genel Müdürlüğü, I. Araştırma Sonuçları Toplantısı, İstanbul 23–26 Mayıs, 1983* [General Directorate of Ancient Monuments and Museums, first Turkish annual meeting for the results of archaeological field surveys, İstanbul, 23–26 May, 1983] <<https://kvmgm.ktb.gov.tr/TR-44761/arastirma-sonuclari-toplantilari.html>> (accessed 1 January 2023).
- KST T. C. Kültür Bakanlığı, *Eski Eserler ve Müzeler Genel Müdürlüğü, I. Kazı Sonuçları Toplantısı, Ankara, Mayıs 1979* [Republic of Turkey, General Directorate of Ancient Monuments and Museums, first Turkish annual meeting for the results of excavations, Ankara, May 1979] <<https://kvmgm.ktb.gov.tr/TR-44760/kazi-sonuclari-toplantilari.html>> (accessed 1 January 2023).
- MÇKKS *12. Müze Çalışmaları ve Kurtarma Kazıları Sempozyumu, 25–27 Nisan 2001, Kuşadası, T. C. Kültür Bakanlığı, Anıtlar ve Müzeler Genel Müdürlüğü* [12th Turkish annual symposium for the museum studies and results of rescue excavations, 25–27 April 2001, Kuşadası, Republic of Turkey, General Directorate of Ancient Monuments and Museums], (2001–2015) <<https://kvmgm.ktb.gov.tr/TR-44763/muzecalismalari-ve-kurtarma-kazilari-sempozyumuyayinl-.html>> (accessed 1 January 2023).
- MKKS *I. Müze Kurtarma Kazıları Semineri, 19–20 Nisan 1990, Ankara, T. C. Kültür Bakanlığı, Anıtlar ve Müzeler Genel Müdürlüğü* [First Turkish annual seminar for the results of rescue excavations undertaken by the local museums, 19–20 April 1990, Ankara, Republic of Turkey, General Directorate of Ancient Monuments and Museums], (1990–2000) <<https://kvmgm.ktb.gov.tr/TR-44763/muze-calismalari-ve-kurtarma-kazilari-sempozyumu-yayinl-.html>> (accessed 1 January 2023).

Scientific committee (in alphabetical order)

Dr Paschalis Androudis (Aristotle University of Thessaloniki),
Dr Roberto Dan (ISMEO – Associazione Internazionale di Studi sul Mediterraneo e l’Oriente, Rome),
Dr Bianca Elena Grigoras (Institutul Național al Patrimoniului, Bucharest),
Dr Petya Ilieva (Bulgarian Academy of Sciences, Sofia),
Dr Emzar Kakhidze (Batumi Archaeological Museum),
Dr Olivier Mariaud (Université Grenoble Alpes, Saint-Martin-d’Hères),
Dr José Carlos Quaresma (Universidade Nova de Lisboa),
Dr Jutta Stroszeck (Deutsches Archäologisches Institut in Athen),
Professor Etienne Wolff (Université Paris Nanterre).

Organizing and executive committee (in alphabetical order)

Professor Hugo Thoen (*emer.*, Ghent / Deinze),
Ms Zoe Tsiamis (University of Thessaly, Volos).

List of the previous
Colloquia Anatolica et Aegaea, Congressus internationales Smyrnenses

- I-** E. Laflı and A. Muller (organ.), “International conference: Terracotta figurines in the Greek and Roman eastern Mediterranean: Production, diffusion, iconography and function”; June 2–6, 2007, Izmir. Website: <web.deu.edu.tr/terracottas>.
- II-** E. Laflı and S. Fünfschilling (organ.), “International workshop: Late Roman glass in Anatolia (fourth to eighth centuries A.D.)”; October 26–28, 2009, Izmir.
- III-** E. Laflı, G. Cankardeş Şenol and A. K. Şenol (organ.), “International workshop on Hellenistic ceramics in Anatolia (fourth to the first centuries B.C.)”; October 12–14, 2010, Izmir.
- IV-** E. Laflı and S. Patacı (organ.), “An international workshop on the pottery finds between fourth century B.C. and eighth century A.D. from northern and central Anatolia”; May 10, 2011, Izmir.
- V-** E. Laflı (organ.), “XVIIth international congress of ancient bronzes. The archaeology of bronzes in Anatolia and the eastern Mediterranean from Protogeometric to Early Byzantine periods (tenth century B.C. to seventh century A.D.)”; May 21–25, 2011, Izmir.
- VI-** E. Laflı (organ.), “Second international conference on the archaeology of Ionia – Landscapes of Ionia: Towns in transition”; May 30–June 2, 2011, Izmir.
- VII-** E. Laflı and G. Labarre (organs.), “Archaeology and history of Lydia from the early Lydian period to late antiquity (eighth century B.C.-sixth century A.D.)”; May 17-18, 2017, Izmir.
- VIII-** E. Laflı (organs.), “*Unguentarium*. A terracotta vessel form and other related vessels in the Hellenistic, Roman and early Byzantine Mediterranean. An international symposium”; May 17-18, 2018, Izmir.
- IX-** E. Laflı and L. Chrzanovski (organs.), “Ancient terracotta lamps from Anatolia and the eastern Mediterranean to Dacia, the Black Sea and beyond. Comparative lychnological studies in the eastern parts of the Roman Empire and peripheral areas. An international symposium”; May 16-17, 2018, Izmir.
- X-** E. Laflı (organs.), “Cappadocia and Cappadocians in the Hellenistic, Roman and Early Byzantine periods. An international symposium on the southeastern part of central Anatolia in classical antiquity”; May 14-15, 2020, on Zoom.us
- XI-** E. Laflı (organs.), “Ancient Greek, Roman and Byzantine engraved gems in the eastern Mediterranean and Black Sea area. An international e-conference on archaeological and archaeogemological approaches”; May 11-12, 2021, on Zoom.us
- XII-** E. Laflı (organs.), “Ancient Greek, Roman and Byzantine fibulae. An international e-conference in honour of Dr Maurizio Buora”; May 12-13, 2022, on Zoom.us
- XIII-** E. Laflı and Zoe Tsiami (organs.), “Studia Bithynica. An e-conference on the archaeology and history of Bithynia in north-western Anatolia”; May 10, 2023, on Zoom.us

**List of the previous *Colloquia Anatolica et Aegaea*,
*Acta congressus communis omnium gentium Smyrnae***

- Ia-** A. Muller and E. Laflı (eds.), *Figurines de terre cuite en Méditerranée grecque et romaine*, Vol. 1: *Production, diffusion, iconographie et fonction*, École française d'Athènes, Bulletin de correspondance hellénique, Supplément 54 (Athens/Paris, De Boccard, 2016).
- Ib-** A. Muller and E. Laflı (eds.), *Figurines de terre cuite en Méditerranée grecque et romaine*, Vol. 2: *Iconographie et contextes*, *Archaïologia* (Villeneuve d'Ascq, Presses Universitaires du Septentrion, 2015).
- II-** E. Laflı (ed.), *Late Antique/Early Byzantine glass in the eastern Mediterranean*, *Colloquia Anatolica et Aegaea – Acta congressus communis omnium gentium Smyrnae II/Dokuz Eylül University, Faculty of Arts, Department of Archaeology, Division for Medieval Archaeology, Publication series, No. 1* (İzmir, Hürriyet Matbaası, 2009) (ISBN 978-605-61525-0-4).
- III-** E. Laflı and S. Patacı (eds.), *Recent studies on the archaeology of Anatolia*, *British Archaeological Reports, International Series 2750* (Oxford, Archaeopress, 2015).
- IV-** E. Laflı (ed.), *Greek, Roman, and Byzantine bronzes from Anatolia and neighbouring regions*, *BAR International Series 3038* (Oxford, BAR Publishing, 2021).
- V-** E. Laflı and G. Labarre (eds.), *Archaeology and history of Lydia from the Early Lydian period to Late Antiquity*, *Collection de l'Institut des sciences et techniques de l'antiquité 40* (Besançon, Presses universitaires de Franche-Comté, 2023).

Announcement of the session on the EAA conference in Rome in 2024 about pithoi/dolia associated with wine production

Paulina Komar

Dr Paulina Komar (Warsaw)

Address: Uniwersytet Warszawski, Wydział Historii, Instytut Archeologii,
ul. Wóycickiego 1/3, bud. 23, pok. 224, PL-01938 Warsaw, Poland.

Phone: +48.576.082 819.

E-mail addresses: <paulina.komar@uw.edu.pl>, <p.komar@uksw.edu.pl>, <paulina.komar@gmail.com>.

Website: <<https://www.researchgate.net/profile/Paulina-Komar>>.

Orcid ID: 0000-0001-6580-223X.

Session: #804

Theme & Session Format

Theme:

1. The Material Record: Current Trends and Future Directions

Session format:

Regular session

Title & Content

Title:

Make Dolia Great Again - Comparative Perspectives on Ancient Clay-jar Winemaking

Content:

In today's wine scene, clay-jar winemaking is a discrete phenomenon, mainly confined to the Caucasus (Georgia, Armenia) and a few artisan winemakers in Mediterranean Europe (Greece, France, Italy, Spain, Portugal) and South America (Peru, Chile). In Antiquity, however, such jars were standard equipment in winemaking facilities spreading from the Caucasus to the Iberian Peninsula. They were the 'karas' of the Armenian Urartu Kingdom, the 'pithoi' of the Greeks and the 'dolia' of the Romans. Surprisingly however, current research on ancient wine has largely ignored the role of these containers in ancient wine production and economy, and their influence on ancient wines' sensory properties remains poorly understood.

With this session, we aim to re-establish the role of clay jars in ancient wine studies by concentrating on aspects of their making and on their effects on wine fermentation and storage. To this purpose, we intend to bring together a holistic and comparative group of researchers working on ancient and contemporary clay jar winemaking in the Mediterranean, the Caucasus and beyond. We are particularly interested in talks dealing with clay jar typologies and forms, geographical and chronological distributions, and archaeometric studies of clay composition and vessel contents; especially if such work leads to insights into processes of wine fermentation and organoleptic evolution.

Keywords:

dolia, pithoi, wine, pottery

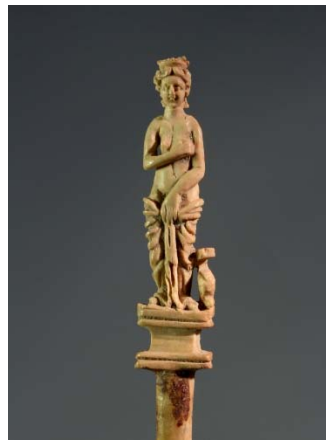
Colloquia Anatolica et Aegaea
Congressus internationales Smyrnenses XV

Call for papers

Online symposium
on the archaeology of

Bone Objects

in the Eastern Mediterranean and the Black Sea area
during the Hellenistic, Roman and Early Byzantine periods
in honour of Hector E. Williams



14 May 2025 / Izmir, Turkey

Meeting venue

Join us on Zoom.us

E-mail

terracottas@deu.edu.tr

Deadline for the abstracts' submission

1 January 2025

Website

<https://deu.academia.edu/ErgunLAFLI/Congressus-internationales-Smyrnenses>

All are welcome